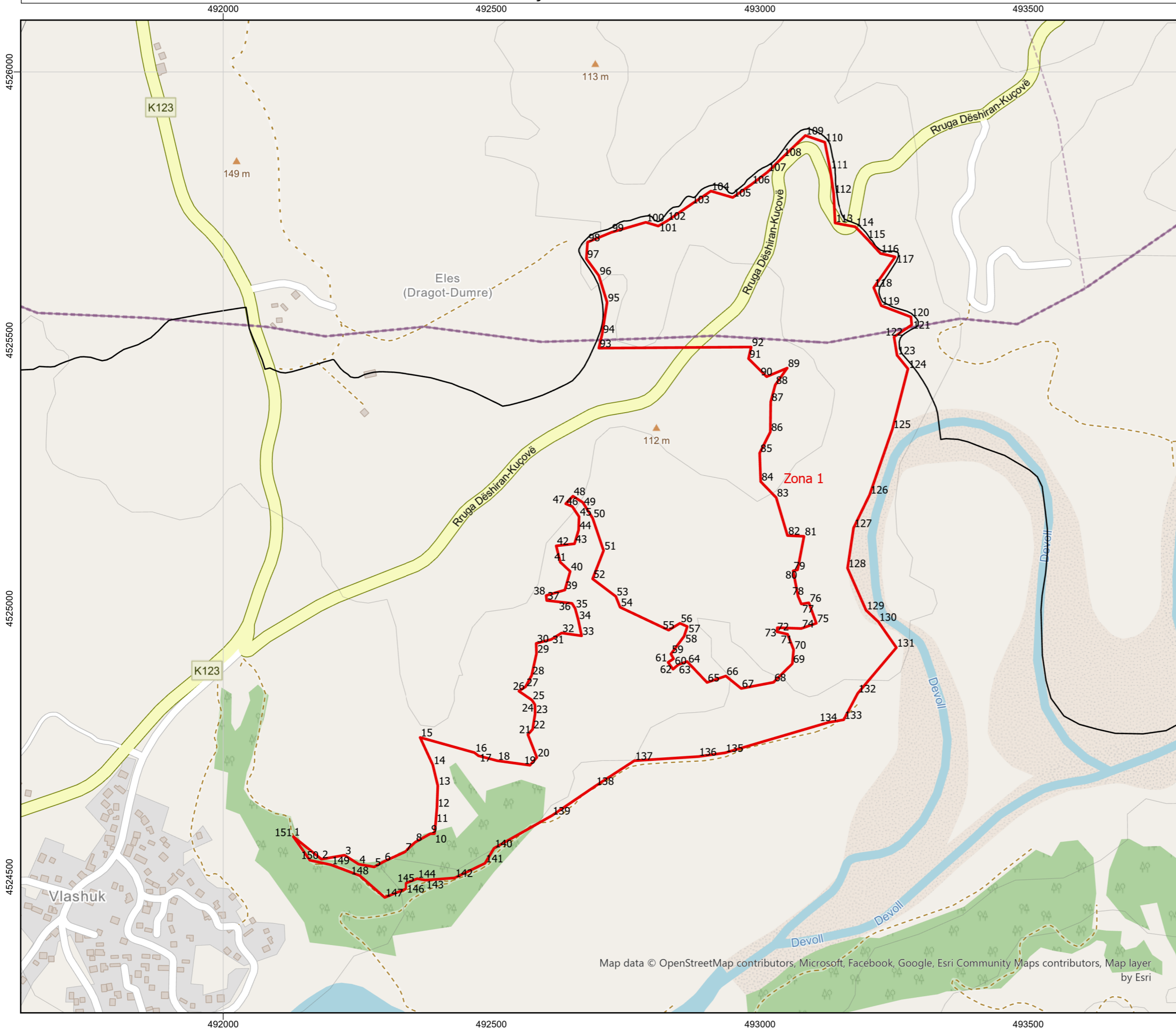


ZONA ME PËRPARËSI ZHVILLIMIN E EKONOMISË MALORE

ZONA 1, NJËSIA ADMINISTRATIVE KOZARË, BASHKIA KUÇOVË, QARKU BERAT



Njësia Administrative	Zona	Sipërfaqja (ha)
Kozarë	Zona 1	43.63
Kozarë	Zona 2	8.08
Kozarë	Zona 3	38.32
Perondi	Zona 4	4.68
Perondi	Zona 5	10.21
Perondi	Zona 6	5.10
Perondi	Zona 7	88.80
Perondi	Zona 8	7.44
Kozarë	Zona 9	6.64
Perondi, Lumas	Zona 10	1.76
Perondi, Lumas	Zona 11	0.96
Perondi, Lumas	Zona 12	8.05
Lumas	Zona 13	14.63
Lumas	Zona 14	14.85
Lumas	Zona 15	0.92
Lumas	Zona 16	31.73
Kozarë	Zona 17	0.84
Perondi	Zona 18	9.84
Lumas	Zona 19	36.90



1:7,000



Legjendë

- Zona me përparësi zhvillimin e ekonomisë malore
- Ndërtesa
- Bashkia Kuçovë
- Izoipse

Kategoritë e Rrjetit Rrugor

- Kategoria A. Autostrade
- Kategoria C. Rruge Interurbane Dytesore
- E. Rruge Urbane Dytesore
- Kategoria F. Rruge Lokale

*Zona 1 ndodhet në territorin e Njesisë Administrative Kozarë, me sipërfaqe prej 43.63 ha

**Sistemi Koordinativ: KRGJSH (Korniza Referuese Gjeodezike Shqiptare) EPSG 6870

Zona I					
Njësia Administrative Kozarë					
Nr.	Koordinata X	Koordinata Y	Nr.	Koordinata X	Koordinata Y
1	492130.4601	4524575.298	77	493076.8942	4525008.637
2	492182.6909	4524533.254	78	493070.7342	4525023.197
3	492225.8109	4524540.674	79	493061.6342	4525070.517
4	492252.1309	4524523.874	80	493069.9642	4525072.477
5	492280.9709	4524518.834	81	493081.8642	4525134.777
6	492299.1709	4524528.914	82	493051.0642	4525136.177
7	492338.9309	4524547.114	83	493030.0642	4525206.877
8	492358.5309	4524565.034	84	493001.2508	4525236.723
9	492386.5309	4524580.714	85	492999.2908	4525289.923
10	492394.0909	4524580.714	86	493019.1708	4525329.263
11	492396.3309	4524601.154	87	493019.8708	4525385.263
12	492398.7109	4524629.294	88	493028.2708	4525416.763
13	492400.2509	4524670.174	89	493050.6708	4525448.263
14	492391.0109	4524708.814	90	493012.1708	4525432.163
15	492367.3509	4524760.054	91	492978.5708	4525465.763
16	492468.4309	4524731.774	92	492983.4708	4525487.463
17	492475.9909	4524725.894	93	492699.9708	4525485.363
18	492510.9909	4524716.654	94	492706.2708	4525511.963
19	492571.7509	4524708.254	95	492715.3708	4525570.763
20	492584.6309	4524722.814	96	492699.9708	4525620.463
21	492567.9709	4524765.374	97	492676.8708	4525651.963
22	492576.7909	4524775.314	98	492678.9708	4525682.763
23	492581.4109	4524804.294	99	492723.0708	4525700.963
24	492581.1309	4524820.954	100	492787.4708	4525719.863
25	492575.5309	4524829.634	101	492810.5708	4525712.863
26	492551.1709	4524846.294	102	492827.3708	4525722.663
27	492563.4909	4524854.414	103	492872.1708	4525753.463
28	492574.9709	4524875.694	104	492908.5708	4525777.963
29	492583.9309	4524916.294	105	492949.1708	4525766.063
30	492583.3709	4524935.334	106	492984.1708	4525790.563
31	492611.3709	4524942.614	107	493014.2708	4525813.663
32	492630.6909	4524954.654	108	493042.9708	4525841.663
33	492667.9542	4524949.417	109	493084.2708	4525881.563
34	492661.7942	4524978.817	110	493120.6708	4525868.963
35	492655.9142	4525000.377	111	493130.4708	4525818.563
36	492650.0342	4525009.897	112	493137.0508	4525773.063
37	492602.9942	4525015.217	113	493139.7108	4525718.463
38	492601.8742	4525024.457	114	493178.2108	4525711.463
39	492636.8742	4525034.817	115	493199.9108	4525689.063
40	492646.6742	4525069.397	116	493225.1108	4525661.763
41	492628.1942	4525086.757	117	493252.4108	4525655.463
42	492620.6342	4525116.997	118	493212.5108	4525598.063
43	492654.7942	4525120.917	119	493226.5108	4525564.463
44	492662.3542	4525146.397	120	493281.8108	4525543.463
45	492663.1942	4525171.317	121	493283.2108	4525528.763
46	492650.5942	4525190.357	122	493250.3108	4525506.363
47	492638.2742	4525195.397	123	493255.9108	4525472.063
48	492651.7142	4525209.677	124	493276.2108	4525446.863
49	492670.1942	4525197.917	125	493247.3708	4525334.863
50	492688.5342	4525168.377	126	493205.1001	4525212.718
51	492708.8342	4525108.177	127	493175.0001	4525150.418
52	492688.3942	4525055.537	128	493163.8001	4525075.378
53	492731.5142	4525022.777	129	493198.2401	4524996.978
54	492739.6342	4525002.617	130	493221.2001	4524975.418
55	492829.9342	4524959.917	131	493254.6601	4524927.398
56	492850.9342	4524972.797	132	493182.5601	4524841.998
57	492864.6542	4524966.637	133	493156.6601	4524792.998
58	492858.7742	4524948.717	134	493127.2601	4524788.098
59	492834.1342	4524915.397	135	492934.7601	4524731.398
60	492839.1742	4524906.717	136	492885.0601	4524724.398
61	492828.8142	4524899.997	137	492766.0601	4524716.698
62	492838.0542	4524887.117	138	492693.9601	4524669.798
63	492847.5742	4524895.517	139	492612.7601	4524614.498
64	492864.3742	4524901.397	140	492504.9601	4524553.598
65	492901.3342	4524862.477	141	492488.1601	4524525.598
66	492936.3342	4524874.517	142	492431.4601	4524498.298
67	492964.8942	4524851.277	143	492376.8601	4524494.098
68	493025.0942	4524862.757	144	492362.1601	4524496.898
69	493060.0942	4524897.477	145	492340.4601	4524488.498
70	493062.4742	4524923.517	146	492340.4601	4524477.998
71	493051.2742	4524952.357	147	492300.5601	4524461.898
72	493031.3942	4524956.977	148	492254.3601	4524502.498
73	493032.2342	4524964.537	149	492200.4601	4524522.798
74	493076.7542	4524962.997	150	492161.2601	4524531.198
75	493104.7542	4524972.797	151	492130.4601	4524575.298
76	493090.8942	4525010.877			

ZONA ME PËRPARËSI ZHVILLIMIN E EKONOMISË MALORE

ZONA 2, NJËSIA ADMINISTRATIVE KOZARË, BASHKIA KUÇOVË, QARKU BERAT



491500

492000

492500

4525000

4524500

4524000

491500

492000

492500

4525000

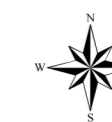
4524500

4524000

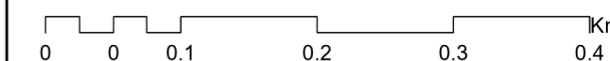


BASHKIA KUÇOVË

Njësia Administrative	Zona	Sipërfaqja (ha)
Kozarë	Zona 1	43.63
Kozarë	Zona 2	8.08
Kozarë	Zona 3	38.32
Perondi	Zona 4	4.68
Perondi	Zona 5	10.21
Perondi	Zona 6	5.10
Perondi	Zona 7	88.80
Perondi	Zona 8	7.44
Kozarë	Zona 9	6.64
Perondi, Lumas	Zona 10	1.76
Perondi, Lumas	Zona 11	0.96
Perondi, Lumas	Zona 12	8.05
Lumas	Zona 13	14.63
Lumas	Zona 14	14.85
Lumas	Zona 15	0.92
Lumas	Zona 16	31.73
Kozarë	Zona 17	0.84
Perondi	Zona 18	9.84
Lumas	Zona 19	36.90



1:5,000



Legjendë

- Zona me përparësi zhvillimin e ekonomisë malore
- Ndërtesa
- Bashkia Kuçovë
- Izoipse
- Kategoritë e Rrjetit Rrugor
 - Kategoria A. Autostrade
 - Kategoria C. Rruge Interurbane Dytesore
 - E. Rruge Urbane Dytesore
 - Kategoria F. Rruge Lokale

*Zona 2 ndodhet në territorin e Njesisë Administrative Kozarë, me sipërfaqe prej 8.08 ha

**Sistemi Koordinativ: KRGJSH (Korniza Referuese Gjeodezike Shqiptare) EPSG 6870

Map data © OpenStreetMap contributors, Microsoft, Facebook, Google, Esri Community Maps contributors, Map layer by Esri

Zona 2					
Njësia Administrative Kozarë					
Nr.	Koordinata X	Koordinata Y	Nr.	Koordinata X	Koordinata Y
1	492009.0581	4524845.13	52	491974.4043	4524196.55
2	492013.2581	4524771.63	53	491966.1443	4524210.27
3	492065.7581	4524863.33	54	491964.7443	4524234.07
4	492069.9581	4524848.63	55	492008.0043	4524238.27
5	492051.0581	4524734.53	56	491985.6043	4524211.11
6	492051.0581	4524702.33	57	491985.7443	4524206.63
7	492035.6581	4524670.83	58	491984.3443	4524205.09
8	492041.2581	4524647.73	59	491988.6843	4524182.83
9	492091.6581	4524609.93	60	492015.9843	4524179.19
10	492114.7581	4524605.03	61	492036.0043	4524233.37
11	492120.3581	4524570.73	62	492034.1843	4524235.89
12	492162.3581	4524523.13	63	492036.0043	4524238.97
13	492192.4581	4524517.53	64	492027.7443	4524256.05
14	492250.5581	4524497.23	65	492029.3589	4524271.535
15	492283.0381	4524469.51	66	492033.1389	4524285.395
16	492282.7581	4524461.11	67	492015.2189	4524314.935
17	492288.9181	4524448.51	68	492046.2989	4524330.335
18	492303.1981	4524442.91	69	492097.936	4524331.969
19	492310.7581	4524436.47	70	492132.096	4524333.369
20	492323.0781	4524420.79	71	492131.256	4524394.969
21	492354.6067	4524405.705	72	492111.376	4524384.609
22	492295.1067	4524390.865	73	492107.176	4524414.009
23	492258.1467	4524371.265	74	492127.056	4524433.889
24	492236.8667	4524349.985	75	492120.616	4524450.129
25	492224.2667	4524332.065	76	492107.596	4524467.909
26	492208.0267	4524332.625	77	492084.776	4524500.249
27	492163.6843	4524292.45	78	492072.456	4524517.329
28	492146.0443	4524276.77	79	492063.356	4524517.889
29	492107.6843	4524236.73	80	492049.636	4524531.749
30	492045.2443	4524170.09	81	492066.576	4524540.849
31	492011.5043	4524111.15	82	492046.836	4524580.049
32	491963.9043	4524038.91	83	492041.796	4524582.009
33	491852.6043	4523915.29	84	492029.896	4524594.049
34	491797.1643	4523866.57	85	492015.896	4524611.129
35	491769.1643	4523876.37	86	492004.416	4524624.149
36	491770.5643	4523892.05	87	492008.336	4524646.829
37	491792.4043	4523943.85	88	491997.136	4524654.389
38	491829.3643	4523943.57	89	492003.996	4524666.149
39	491849.2443	4523950.29	90	492000.076	4524689.809
40	491867.7243	4523972.97	91	491976.836	4524689.809
41	491877.8043	4523983.61	92	491987.896	4524738.179
42	491885.6443	4523992.85	93	491981.736	4524755.539
43	491906.3643	4524014.97	94	491993.356	4524799.359
44	491938.7043	4524047.31	95	491986.636	4524844.999
45	491963.0643	4524069.43	96	491993.076	4524876.079
46	491962.7843	4524063.83	97	492005.396	4524902.399
47	491982.6643	4524092.39	98	492015.3581	4524904.63
48	491993.3043	4524124.59	99	491999.9581	4524879.43
49	491992.3243	4524128.09	100	491999.2581	4524847.93
50	491993.4443	4524132.01	101	492009.0581	4524845.13
51	491976.5043	4524190.11			

ZONA ME PËRPARËSI ZHVILLIMIN E EKONOMISË MALORE
ZONA 3, NJËSIA ADMINISTRATIVE KOZARË, BASHKIA KUÇOVË, QARKU BERAT



495000

495500

496000

4525500

4525500

4525000

4525000

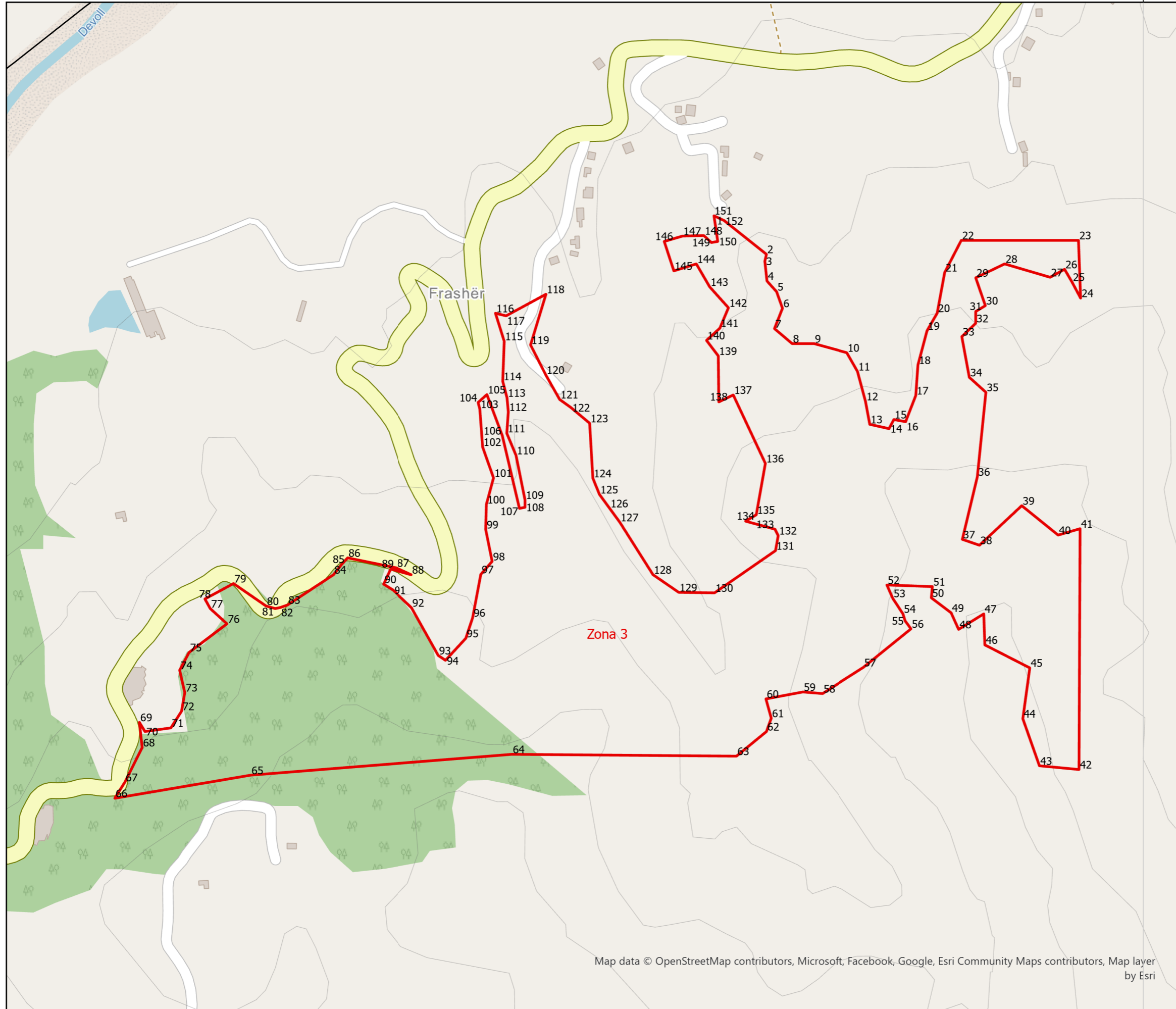
4524500

4524500

495000

495500

496000

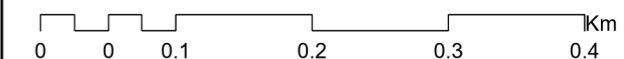


BASHKIA
KUÇOVË

Njësia Administrative	Zona	Sipërfaqja (ha)
Kozarë	Zona 1	43.63
Kozarë	Zona 2	8.08
Kozarë	Zona 3	38.32
Perondi	Zona 4	4.68
Perondi	Zona 5	10.21
Perondi	Zona 6	5.10
Perondi	Zona 7	88.80
Perondi	Zona 8	7.44
Kozarë	Zona 9	6.64
Perondi, Lumas	Zona 10	1.76
Perondi, Lumas	Zona 11	0.96
Perondi, Lumas	Zona 12	8.05
Lumas	Zona 13	14.63
Lumas	Zona 14	14.85
Lumas	Zona 15	0.92
Lumas	Zona 16	31.73
Kozarë	Zona 17	0.84
Perondi	Zona 18	9.84
Lumas	Zona 19	36.90



1:5,000



Legjendë

- ▭ Zona me përparësi zhvillimin e ekonomisë malore
- Ndërtesa
- Bashkia Kuçovë
- Izoipse
- Kategoritë e Rrjetit Rrugor**
- Kategoria A. Autostrade
- Kategoria C. Rruge Interurbane Dytesore
- Kategoria F. Rruge Lokale

*Zona 3 ndodhet në territorin e Njesisë Administrative Kozarë, me sipërfaqe prej 38.32 ha

**Sistemi Koordinativ: KRGJSH (Korniza Referuese Gjeodezike Shqiptare) EPSG 6870

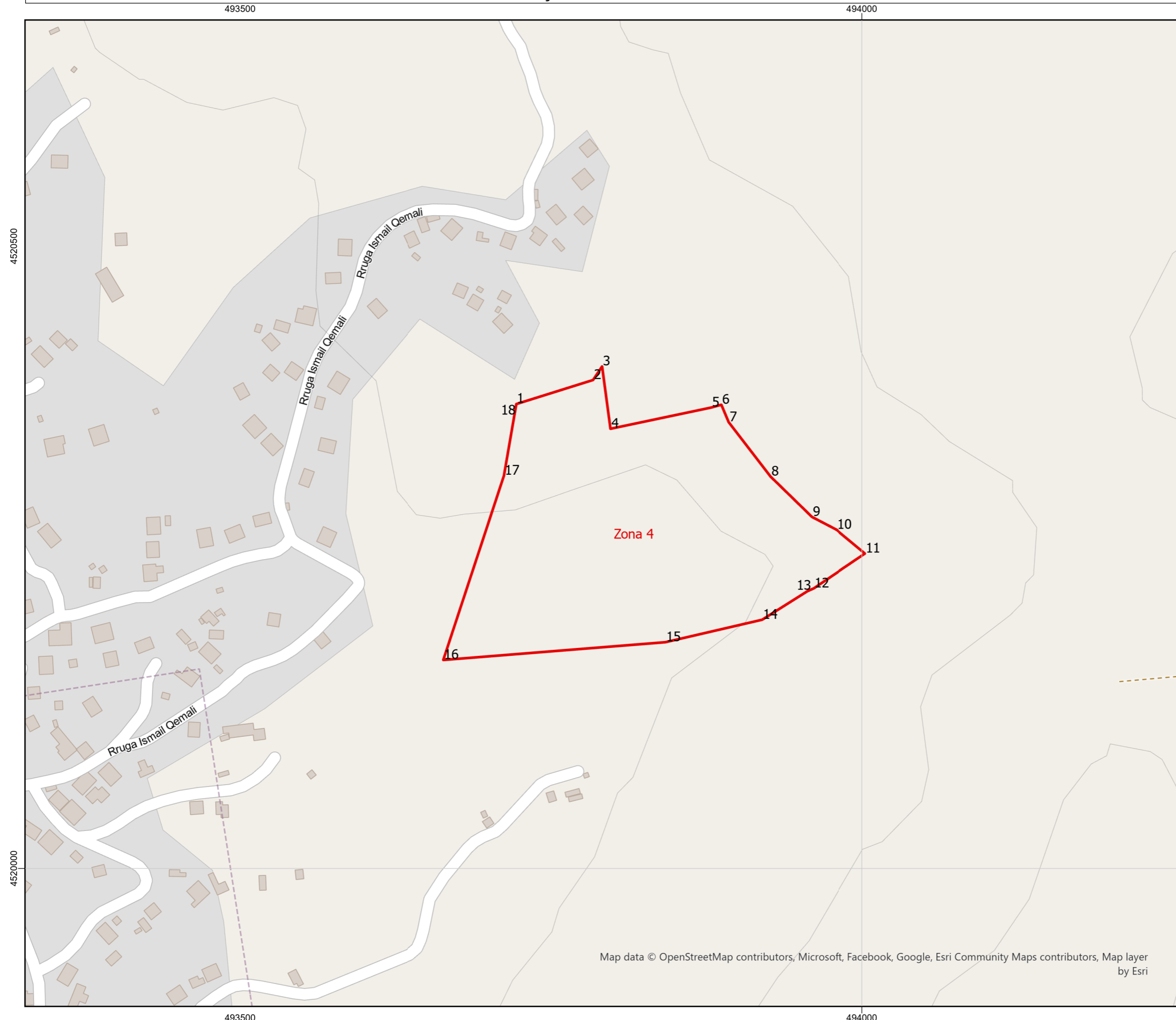
Map data © OpenStreetMap contributors, Microsoft, Facebook, Google, Esri Community Maps contributors, Map layer by Esri

Zona 3
Njësia Administrative Kozarë

Nr.	Koordinata X	Koordinata Y	Nr.	Koordinata X	Koordinata Y
1	495451.0641	4525510.44	77	494778.2126	4525002.647
2	495506.3641	4525466.34	78	494771.2126	4525015.247
3	495504.2641	4525457.24	79	494808.6326	4525035.45
4	495507.0641	4525431.34	80	494851.1926	4525006.05
5	495519.6641	4525417.34	81	494863.2326	4525002.69
6	495527.3641	4525395.64	82	494869.9526	4525004.09
7	495516.8641	4525369.04	83	494879.4726	4525007.45
8	495539.9641	4525349.44	84	494939.3926	4525046.93
9	495568.6641	4525349.44	85	494950.0326	4525060.37
10	495612.0641	4525337.54	86	494957.8726	4525069.05
11	495626.0641	4525313.04	87	495022.1326	4525055.89
12	495636.5641	4525273.84	88	495041.7326	4525046.93
13	495642.1641	4525243.74	89	495014.2926	4525054.49
14	495667.3641	4525238.14	90	495005.0526	4525034.61
15	495673.6641	4525250.04	91	495017.6526	4525026.77
16	495689.0641	4525247.24	92	495042.0126	4525003.81
17	495702.3641	4525281.54	93	495077.0126	4524941.37
18	495705.1641	4525321.44	94	495086.5326	4524934.93
19	495717.0641	4525366.24	95	495113.1326	4524963.77
20	495730.3641	4525389.34	96	495122.0926	4524990.79
21	495740.1641	4525442.54	97	495132.7326	4525047.35
22	495761.8641	4525484.54	98	495147.5726	4525064.43
23	495915.1641	4525484.54	99	495139.1726	4525106.15
24	495917.9641	4525408.94	100	495140.0126	4525138.91
25	495906.7641	4525429.94	101	495149.3926	4525173.7
26	495896.9641	4525446.74	102	495135.1126	4525214.16
27	495878.0641	4525436.24	103	495131.4726	4525263.72
28	495818.5641	4525453.74	104	495129.2326	4525272.4
29	495780.7641	4525435.54	105	495140.7126	4525282.76
30	495793.3641	4525399.14	106	495160.8726	4525229
31	495780.7641	4525391.44	107	495183.2726	4525133.8
32	495780.7641	4525376.04	108	495190.5526	4525135.2
33	495762.5641	4525358.54	109	495190.5526	4525145
34	495772.3641	4525305.34	110	495178.7926	4525203.24
35	495794.0641	4525285.74	111	495166.7526	4525232.08
36	495782.8641	4525175.14	112	495168.7126	4525260.08
37	495763.2641	4525093.24	113	495167.0326	4525278.56
38	495785.6641	4525085.54	114	495161.4326	4525300.12
39	495840.9641	4525137.34	115	495163.3926	4525352.48
40	495888.5641	4525098.84	116	495151.9126	4525389.16
41	495917.2641	4525107.24	117	495165.9126	4525385.8

42	495915.8794	4524792.036	118	495217.9926	4525414.08
43	495864.0794	4524796.936	119	495197.8326	4525347.72
44	495842.3794	4524858.536	120	495217.7126	4525308.52
45	495851.4794	4524925.036	121	495235.9126	4525276.32
46	495792.6794	4524955.136	122	495250.7526	4525265.68
47	495791.2794	4524995.736	123	495275.1126	4525245.24
48	495758.3794	4524975.436	124	495279.3126	4525173.28
49	495748.5794	4524997.136	125	495287.9641	4525152.04
50	495722.6794	4525016.736	126	495301.2641	4525133.84
51	495724.0794	4525031.436	127	495314.5641	4525115.64
52	495664.5794	4525033.536	128	495357.9641	4525047.04
53	495672.2794	4525016.036	129	495391.5641	4525023.94
54	495685.5794	4524995.736	130	495438.4641	4525023.24
55	495688.3794	4524986.636	131	495518.2641	4525078.54
56	495696.0794	4524976.136	132	495521.7641	4525098.14
57	495633.7794	4524925.736	133	495517.5641	4525106.54
58	495579.8794	4524891.436	134	495479.0641	4525117.04
59	495553.9794	4524893.536	135	495493.0641	4525125.44
60	495505.6794	4524884.436	136	495504.9641	4525192.64
61	495512.6794	4524859.236	137	495462.9641	4525282.24
62	495506.3794	4524841.736	138	495444.0641	4525273.14
63	495467.1794	4524809.536	139	495443.3641	4525333.34
64	495173.4165	4524811.946	140	495427.9641	4525353.64
65	494831.1165	4524784.646	141	495445.4641	4525369.74
66	494653.3326	4524754.427	142	495456.6641	4525396.34
67	494666.4926	4524775.427	143	495432.1641	4525423.64
68	494689.1726	4524820.787	144	495414.6641	4525453.74
69	494685.5326	4524853.827	145	495385.2641	4525444.64
70	494692.8126	4524841.787	146	495372.6641	4525483.14
71	494726.6926	4524846.547	147	495396.4641	4525490.14
72	494740.6926	4524868.387	148	495424.4641	4525490.84
73	494744.8926	4524892.747	149	495434.2641	4525481.74
74	494738.1726	4524922.007	150	495442.6641	4525483.14
75	494750.4926	4524945.247	151	495437.7641	4525516.74
76	494800.0526	4524982.767	152	495451.0641	4525510.44

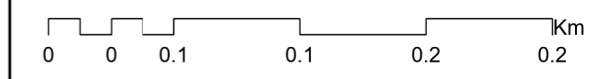
ZONA ME PËRPARËSI ZHVILLIMIN E EKONOMISË MALORE
ZONA 4, NJËSIA ADMINISTRATIVE PERONDI, BASHKIA KUÇOVË, QARKU BERAT



Njësia Administrative	Zona	Sipërfaqja (ha)
Kozarë	Zona 1	43.63
Kozarë	Zona 2	8.08
Kozarë	Zona 3	38.32
Perondi	Zona 4	4.68
Perondi	Zona 5	10.21
Perondi	Zona 6	5.10
Perondi	Zona 7	88.80
Perondi	Zona 8	7.44
Kozarë	Zona 9	6.64
Perondi, Lumas	Zona 10	1.76
Perondi, Lumas	Zona 11	0.96
Perondi, Lumas	Zona 12	8.05
Lumas	Zona 13	14.63
Lumas	Zona 14	14.85
Lumas	Zona 15	0.92
Lumas	Zona 16	31.73
Kozarë	Zona 17	0.84
Perondi	Zona 18	9.84
Lumas	Zona 19	36.90



1:3,000



Legjendë

- Zona me përparësi zhvillimin e ekonomisë malore
- Ndërtesa
- Bashkia Kuçovë
- Izoipse

Kategoritë e Rrjetit Rrugor

- E. Rruge Urbane Dytësore
- Kategoria F. Rruge Lokale

*Zona 4 ndodhet në territorin e Njesisë Administrative Perondi, me sipërfaqe prej 4.68 ha

**Sistemi Koordinativ: KRGJSH (Korniza Referuese Gjeodezike Shqiptare) EPSG 6870

Zona 4
Njësia Administrative Perondi

Nr.	Koordinata X	Koordinata Y
1	493722.1719	4520373.22
2	493783.7719	4520392.54
3	493791.0519	4520403.46
4	493797.7719	4520353.34
5	493878.6919	4520370.42
6	493886.8119	4520372.66
7	493892.6919	4520358.66
8	493926.2919	4520314.98
9	493959.6119	4520282.5
10	493979.4919	4520272.14
11	494002.4519	4520253.1
12	493961.0119	4520225.1
13	493955.9719	4520222.86
14	493919.5719	4520199.9
15	493841.8719	4520181.84
16	493663.5119	4520167.56
17	493712.2319	4520315.68
18	493722.1719	4520373.22

ZONA ME PËRPARËSI ZHVILLIMIN E EKONOMISË MALORE
ZONA 5, NJËSIA ADMINISTRATIVE PERONDI, BASHKIA KUÇOVË, QARKU BERAT



495500

496000

496500

4523000

4523000

4522500

4522500

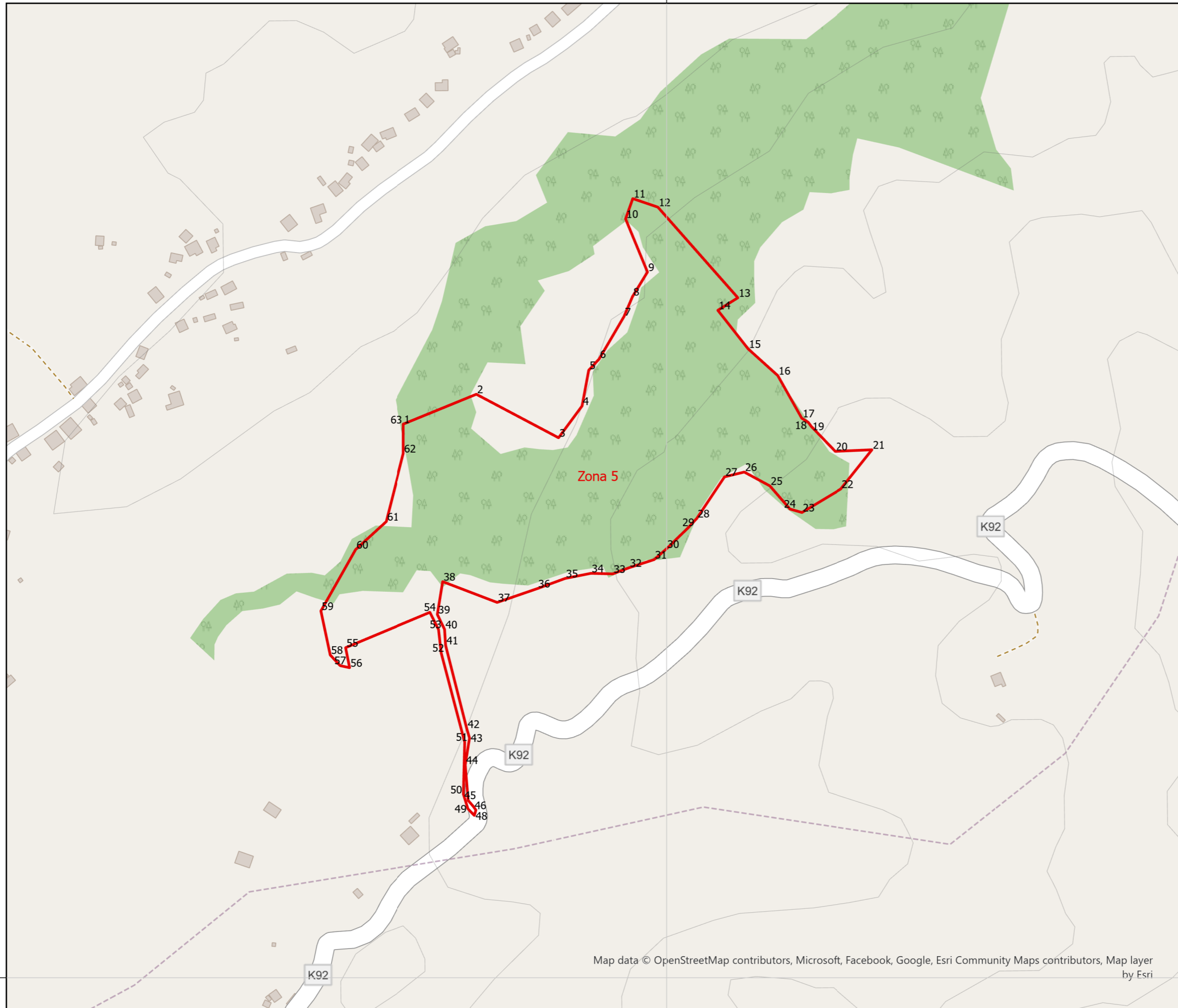
4522000

4522000

495500

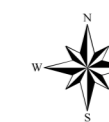
496000

496500

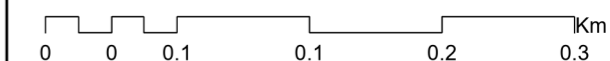


BASHKIA
KUÇOVË

Njësia Administrative	Zona	Sipërfaqja (ha)
Kozarë	Zona 1	43.63
Kozarë	Zona 2	8.08
Kozarë	Zona 3	38.32
Perondi	Zona 4	4.68
Perondi	Zona 5	10.21
Perondi	Zona 6	5.10
Perondi	Zona 7	88.80
Perondi	Zona 8	7.44
Kozarë	Zona 9	6.64
Perondi, Lumas	Zona 10	1.76
Perondi, Lumas	Zona 11	0.96
Perondi, Lumas	Zona 12	8.05
Lumas	Zona 13	14.63
Lumas	Zona 14	14.85
Lumas	Zona 15	0.92
Lumas	Zona 16	31.73
Kozarë	Zona 17	0.84
Perondi	Zona 18	9.84
Lumas	Zona 19	36.90



1:4,000



Legjendë

- Zona me përparësi zhvillimin e ekonomisë malore
- Ndërtesa
- Bashkia Kuçovë
- Izoipse
- Kategoritë e Rrjetit Rrugor
- Kategoria C. Rruge Interurbane Dytesore

*Zona 5 ndodhet në territorin e Njesisë Administrative Perondi, me sipërfaqe prej 10.21 ha

**Sistemi Koordinativ: KRGJSH (Korniza Referuese Gjeodezike Shqiptare) EPSG 6870

Map data © OpenStreetMap contributors, Microsoft, Facebook, Google, Esri Community Maps contributors, Map layer by Esri

Zona 5
Njësia Administrative Perondi

Nr.	Koordinata X	Koordinata Y	Nr.	Koordinata X	Koordinata Y
1	495723.7215	4522580.752	33	495943.5215	4522423.672
2	495800.4415	4522612.112	34	495920.5615	4522424.232
3	495886.6815	4522566.472	35	495893.6815	4522418.912
4	495911.3215	4522599.792	36	495864.5615	4522408.272
5	495918.3215	4522637.312	37	495822.2815	4522393.712
6	495929.2415	4522649.072	38	495765.1615	4522415.552
7	495955.2815	4522693.592	39	495759.5615	4522381.112
8	495964.2415	4522714.592	40	495767.1215	4522365.432
9	495979.9215	4522740.352	41	495768.2415	4522348.632
10	495956.9615	4522796.072	42	495790.5015	4522260.992
11	495964.5215	4522817.352	43	495793.3015	4522251.472
12	495990.8415	4522808.392	44	495788.8215	4522223.192
13	496074.7015	4522713.332	45	495791.9015	4522185.952
14	496053.7015	4522700.172	46	495797.2215	4522179.792
15	496085.4815	4522659.712	47	495800.0215	4522175.872
16	496116.5615	4522631.712	48	495798.3415	4522170.272
17	496141.7615	4522586.912	49	495791.6215	4522177.272
18	496148.4815	4522582.712	50	495786.8615	4522192.672
19	496151.5615	4522578.512	51	495788.2615	4522246.992
20	496176.9015	4522552.192	52	495763.6215	4522340.652
21	496215.8215	4522553.872	53	495760.8215	4522365.152
22	496183.0615	4522512.712	54	495751.7215	4522383.352
23	496141.9015	4522488.072	55	495662.8215	4522346.252
24	496129.3015	4522491.712	56	495667.0215	4522325.252
25	496108.3015	4522515.932	57	495657.2215	4522327.352
26	496081.4215	4522530.492	58	495646.7215	4522338.552
27	496060.7015	4522525.452	59	495636.9215	4522384.752
28	496031.5815	4522481.772	60	495673.3215	4522449.152
29	496022.7615	4522472.252	61	495705.5215	4522478.552
30	495999.8015	4522449.852	62	495723.7215	4522549.952
31	495986.9215	4522438.652	63	495723.7215	4522580.752
32	495960.6015	4522430.112			

ZONA ME PËRPARËSI ZHVILLIMIN E EKONOMISË MALORE
ZONA 6, NJËSIA ADMINISTRATIVE PERONDI, BASHKIA KUÇOVË, QARKU BERAT



496000

496500

4523000

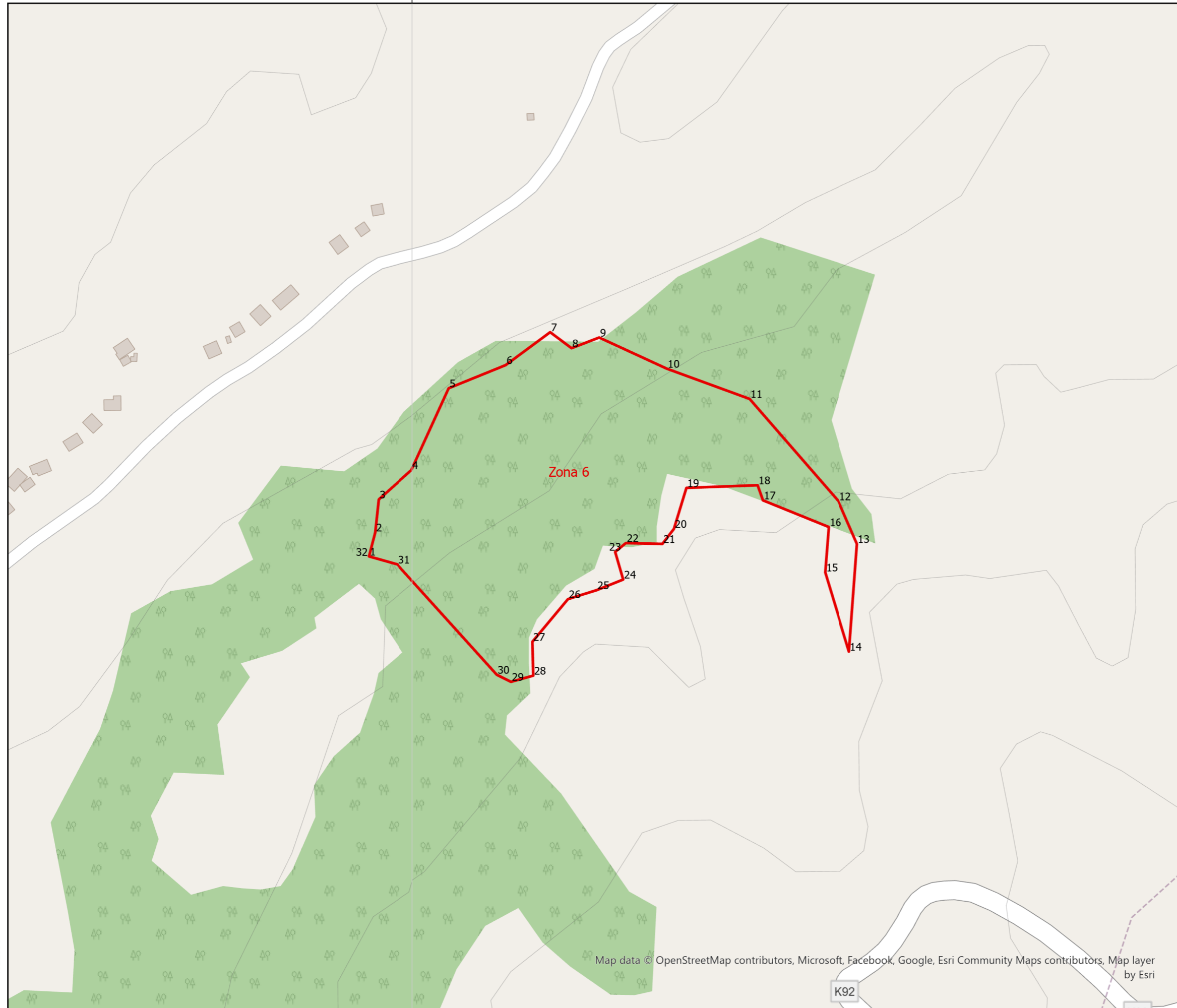
4523000

4522500

4522500

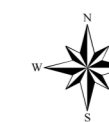
496000

496500

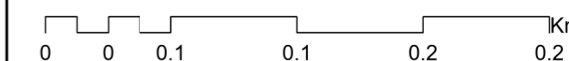


BASHKIA
KUÇOVË

Njësia Administrative	Zona	Sipërfaqja (ha)
Kozarë	Zona 1	43.63
Kozarë	Zona 2	8.08
Kozarë	Zona 3	38.32
Perondi	Zona 4	4.68
Perondi	Zona 5	10.21
Perondi	Zona 6	5.10
Perondi	Zona 7	88.80
Perondi	Zona 8	7.44
Kozarë	Zona 9	6.64
Perondi, Lumas	Zona 10	1.76
Perondi, Lumas	Zona 11	0.96
Perondi, Lumas	Zona 12	8.05
Lumas	Zona 13	14.63
Lumas	Zona 14	14.85
Lumas	Zona 15	0.92
Lumas	Zona 16	31.73
Kozarë	Zona 17	0.84
Perondi	Zona 18	9.84
Lumas	Zona 19	36.90



1:3,000



Legjendë

- Zona me përparësi zhvillimin e ekonomisë malore
- Ndërtesa
- Bashkia Kuçovë
- Izoipse
- Kategoritë e Rrjetit Rrugor**
- Kategoria C. Rruge Interurbane Dytesore

*Zona 6 ndodhet në territorin e Njesisë Administrative Perondi, me sipërfaqe prej 5.10 ha

**Sistemi Koordinativ: KRGJSH (Korniza Referuese Gjeodezike Shqiptare) EPSG 6870

Map data © OpenStreetMap contributors, Microsoft, Facebook, Google, Esri Community Maps contributors, Map layer by Esri

K92

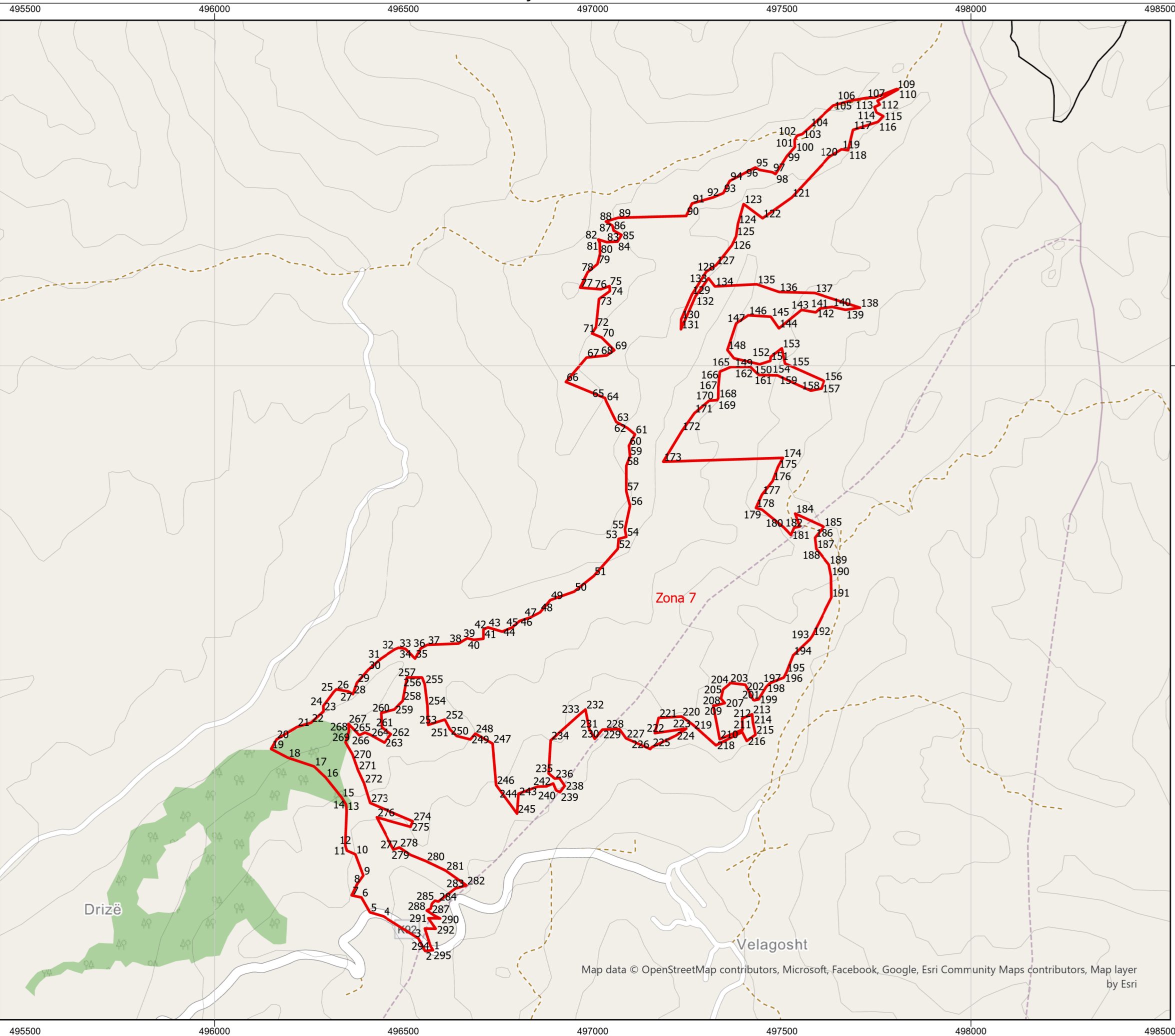
K92

Zona 6
Njësia Administrative Perondi

Nr.	Koordinata X	Koordinata Y
1	495965.7815	4522815.672
2	495970.6815	4522834.572
3	495973.4815	4522860.472
4	495999.3815	4522883.572
5	496028.7815	4522947.972
6	496073.5815	4522966.172
7	496108.5815	4522992.072
8	496125.3815	4522979.472
9	496147.0815	4522987.872
10	496200.2815	4522963.372
11	496265.3815	4522939.572
12	496335.3815	4522859.072
13	496350.0815	4522825.472
14	496343.7815	4522740.772
15	496324.8815	4522803.072
16	496327.6815	4522838.772
17	496275.8815	4522859.772
18	496271.6815	4522871.672
19	496215.6815	4522869.572
20	496205.8815	4522837.372
21	496196.7815	4522825.472
22	496168.0815	4522826.172
23	496159.6815	4522819.172
24	496165.9815	4522797.472
25	496144.9815	4522789.072
26	496122.5815	4522782.072
27	496094.5815	4522748.472
28	496095.2815	4522721.872
29	496077.7815	4522716.972
30	496066.5815	4522722.572
31	495988.1815	4522809.372
32	495965.7815	4522815.672

ZONA ME PËRPARËSI ZHVILLIMIN E EKONOMISË MALORE

ZONA 7, NJËSIA ADMINISTRATIVE PERONDI, BASHKIA KUÇOVË, QARKU BERAT

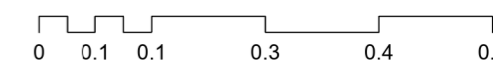


BASHKIA KUÇOVË

Njësia Administrative	Zona	Sipërfaqja (ha)
Kozarë	Zona 1	43.63
Kozarë	Zona 2	8.08
Kozarë	Zona 3	38.32
Perondi	Zona 4	4.68
Perondi	Zona 5	10.21
Perondi	Zona 6	5.10
Perondi	Zona 7	88.80
Perondi	Zona 8	7.44
Kozarë	Zona 9	6.64
Perondi, Lumas	Zona 10	1.76
Perondi, Lumas	Zona 11	0.96
Perondi, Lumas	Zona 12	8.05
Lumas	Zona 13	14.63
Lumas	Zona 14	14.85
Lumas	Zona 15	0.92
Lumas	Zona 16	31.73
Kozarë	Zona 17	0.84
Perondi	Zona 18	9.84
Lumas	Zona 19	36.90



1:10,000



Legjendë

- Zona me përparësi zhvillimin e ekonomisë malore
- Bashkia Kuçovë
- Izoipse
- Kategoritë e Rrjetit Rrugor
 - Kategoria C. Rruge Interurbane Dytesore
 - Kategoria F. Rruge Lokale

*Zona 7 ndodhet në territorin e Njesisë Administrative Perondi, me sipërfaqe prej 88.80 ha

**Sistemi Koordinativ: KRGJSH (Korniza Referuese Gjeodezike Shqiptare) EPSG 6870

Map data © OpenStreetMap contributors, Microsoft, Facebook, Google, Esri Community Maps contributors, Map layer by Esri

Zona 7
Njësia Administrative Perondi

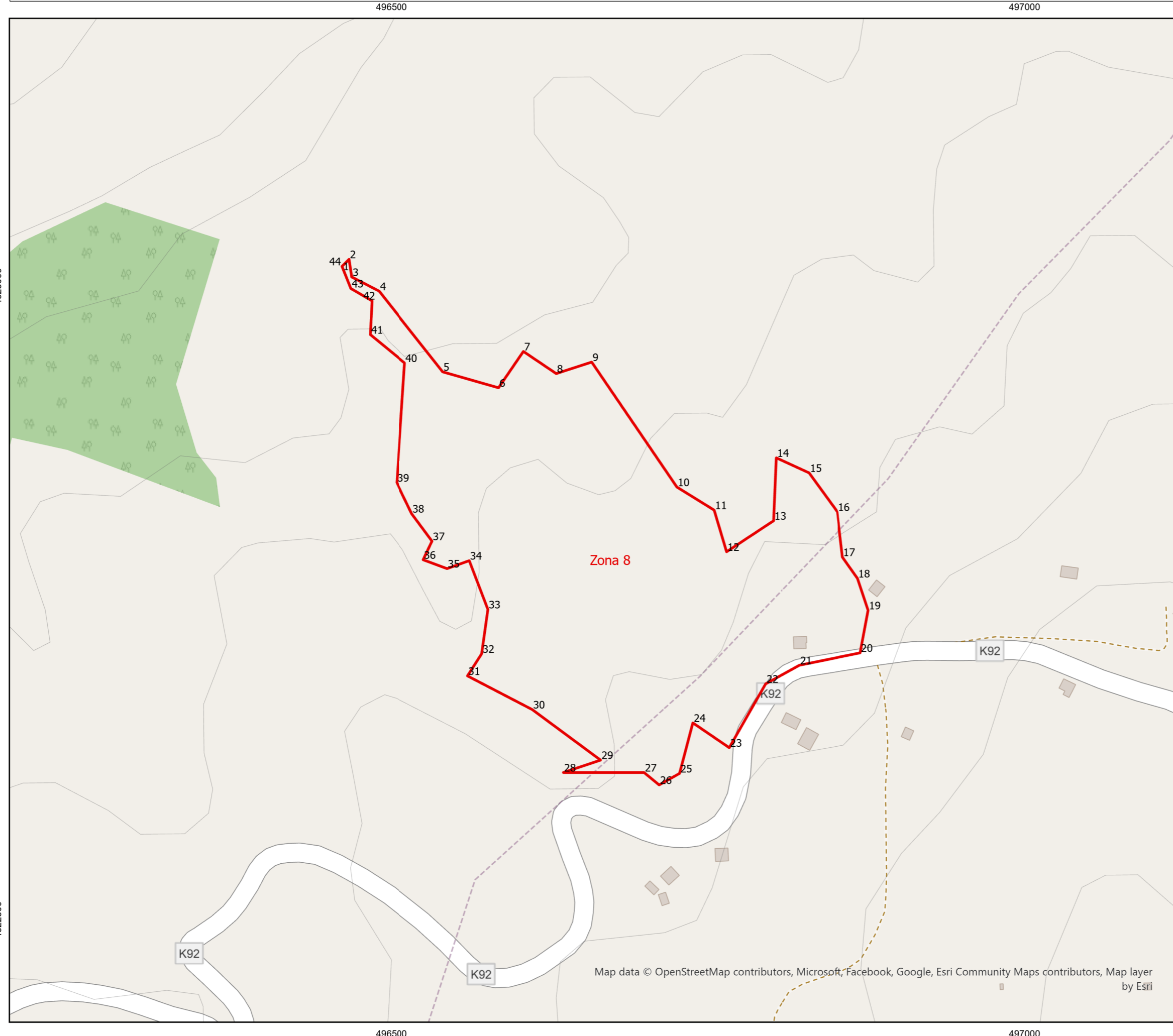
Nr.	Koordinata X	Koordinata Y	Nr.	Koordinata X	Koordinata Y
1	496578.2815	4522455.172	149	497372.7815	4524019.952
2	496557.2815	4522453.072	150	497440.8215	4524003.992
3	496539.0815	4522486.672	151	497468.8215	4524012.952
4	496445.9815	4522544.772	152	497469.9415	4524023.592
5	496410.2815	4522555.272	153	497499.3415	4524046.272
6	496387.8815	4522594.472	154	497507.7415	4524005.952
7	496361.9815	4522600.072	155	497523.4215	4523999.232
8	496376.6815	4522630.172	156	497611.6215	4523959.752
9	496392.7815	4522652.572	157	497604.3415	4523939.872
10	496371.7815	4522708.572	158	497575.7815	4523934.272
11	496349.3815	4522718.372	159	497542.4615	4523949.112
12	496345.1815	4522732.372	160	497487.8615	4523974.592
13	496348.6815	4522823.372	161	497438.8615	4523975.712
14	496347.2815	4522840.172	162	497425.7015	4523987.752
15	496335.3815	4522859.072	163	497416.7415	4523996.992
16	496293.3815	4522911.572	164	497380.7615	4523997.132
17	496262.5815	4522940.972	165	497364.2415	4523996.852
18	496193.2815	4522964.072	166	497335.6815	4523984.532
19	496149.1815	4522987.172	167	497331.7615	4523944.772
20	496163.8815	4523012.372	168	497331.4815	4523914.252
21	496217.7815	4523045.272	169	497328.6815	4523909.212
22	496254.8815	4523056.472	170	497307.4015	4523907.812
23	496287.7815	4523086.572	171	497268.2015	4523874.492
24	496287.0815	4523100.572	172	497235.3015	4523827.592
25	496315.0815	4523138.372	173	497186.0215	4523746.392
26	496321.3815	4523144.672	174	497502.1415	4523756.612
27	496352.8815	4523139.072	175	497489.2615	4523733.092
28	496365.4815	4523132.072	176	497474.9815	4523695.292
29	496375.9815	4523162.172	177	497446.5615	4523658.892
30	496405.3815	4523195.772	178	497430.8815	4523624.172
31	496439.6815	4523225.872	179	497447.1215	4523619.692
32	496476.7815	4523250.372	180	497505.3615	4523572.092
33	496487.2815	4523254.572	181	497523.2815	4523552.772
34	496505.4815	4523251.772	182	497531.6815	4523571.812
35	496530.6815	4523225.872	183	497546.8015	4523575.172
36	496546.0815	4523253.172	184	497534.4815	4523609.332
37	496562.8815	4523262.272	185	497610.6415	4523574.612
38	496645.4815	4523265.772	186	497587.1215	4523545.492
39	496668.5815	4523279.772	187	497590.4815	4523516.092
40	496686.0815	4523275.572	188	497603.9215	4523499.852
41	496711.2815	4523278.372	189	497624.3615	4523474.652

42	496711.2815	4523302.872	190	497630.2415	4523444.412
43	496723.1815	4523308.472	191	497631.3615	4523387.432
44	496760.9815	4523297.272	192	497580.1215	4523286.072
45	496787.5815	4523308.472	193	497573.6815	4523277.112
46	496806.4815	4523325.272	194	497529.1615	4523234.272
47	496835.8815	4523335.072	195	497511.2415	4523189.052
48	496861.0815	4523348.372	196	497504.5215	4523175.892
49	496887.6815	4523380.572	197	497467.8415	4523161.052
50	496950.6815	4523402.972	198	497457.6215	4523150.692
51	497002.4815	4523444.272	199	497437.7415	4523118.212
52	497066.1815	4523516.372	200	497426.8215	4523115.692
53	497068.2815	4523542.272	201	497423.7415	4523117.092
54	497088.5815	4523547.872	202	497403.0215	4523156.852
55	497085.0815	4523567.472	203	497362.7015	4523161.612
56	497098.3815	4523629.772	204	497360.4615	4523157.972
57	497088.5815	4523668.272	205	497344.2215	4523144.532
58	497088.5815	4523735.472	206	497338.6215	4523120.172
59	497098.3815	4523761.372	207	497348.7015	4523108.412
60	497095.5815	4523788.672	208	497323.6415	4523101.692
61	497111.6815	4523818.772	209	497318.1815	4523101.832
62	497091.3815	4523835.572	210	497335.2615	4523012.932
63	497061.9815	4523851.672	211	497395.4615	4523038.132
64	497035.3815	4523906.272	212	497394.9015	4523068.092
65	497032.5815	4523914.672	213	497420.9415	4523078.732
66	496928.9815	4523957.372	214	497422.9015	4523057.452
67	496983.5815	4524021.772	215	497429.9015	4523024.972
68	497036.7815	4524027.372	216	497406.6615	4523008.172
69	497057.0815	4524041.372	217	497394.6215	4523031.972
70	497023.4815	4524074.972	218	497325.1815	4522996.692
71	496998.2815	4524085.472	219	497264.7015	4523051.012
72	497008.7815	4524102.972	220	497234.7415	4523072.852
73	497016.4815	4524176.472	221	497173.9815	4523069.212
74	497045.1815	4524197.472	222	497163.9015	4523028.892
75	497044.4815	4524210.772	223	497247.0615	4523040.932
76	497021.3815	4524202.372	224	497219.0615	4523022.172
77	496966.7815	4524206.572	225	497156.3415	4522991.932
78	496986.3815	4524247.172	226	497151.8615	4522986.892
79	497012.2815	4524268.872	227	497087.8815	4523015.172
80	497019.2815	4524296.172	228	497070.3815	4523039.672
81	497018.5815	4524324.872	229	497025.5815	4523038.272
82	497014.3815	4524333.972	230	497005.2815	4523013.772
83	497036.7815	4524326.972	231	496990.5815	4523040.372
84	497065.4815	4524328.372	232	496980.7815	4523091.472
85	497075.9815	4524345.872	233	496967.4815	4523080.272
86	497054.9815	4524357.772	234	496888.8015	4523009.572

87	497052.1815	4524370.372	235	496883.4815	4522922.492
88	497034.6815	4524381.572	236	496899.7215	4522908.772
89	497066.8815	4524391.372	237	496912.0415	4522909.892
90	497246.7815	4524396.272	238	496926.0415	4522889.592
91	497262.1815	4524429.172	239	496913.4415	4522872.792
92	497318.1815	4524445.272	240	496903.3615	4522877.832
93	497344.7815	4524456.472	241	496895.5215	4522895.752
94	497361.5815	4524488.672	242	496877.6015	4522888.192
95	497429.4815	4524524.372	243	496854.9215	4522887.632
96	497439.9815	4524518.072	244	496803.8215	4522868.872
97	497474.2815	4524511.772	245	496800.1815	4522815.952
98	497482.6815	4524506.872	246	496744.7415	4522891.692
99	497512.7815	4524554.472	247	496735.5015	4523001.172
100	497533.7815	4524578.272	248	496690.0015	4523027.632
101	497533.0815	4524597.172	249	496676.7015	4523012.232
102	497539.3815	4524608.372	250	496641.0015	4523021.332
103	497553.3815	4524612.572	251	496622.8015	4523038.832
104	497573.6815	4524630.772	252	496609.5015	4523064.732
105	497636.1215	4524688.032	253	496565.4015	4523050.732
106	497682.6015	4524700.912	254	496563.3015	4523101.832
107	497724.3215	4524708.192	255	496556.3015	4523158.532
108	497745.6015	4524708.752	256	496549.3015	4523176.032
109	497803.8415	4524731.712	257	496509.4015	4523176.032
110	497807.7615	4524730.872	258	496498.2015	4523114.432
111	497753.1615	4524700.632	259	496475.8015	4523091.332
112	497759.3215	4524690.552	260	496440.1015	4523082.232
113	497745.3215	4524684.112	261	496442.2015	4523043.732
114	497750.3615	4524669.832	262	496466.7015	4523026.232
115	497768.5615	4524660.032	263	496448.7815	4523003.832
116	497754.5615	4524644.912	264	496410.9815	4523024.832
117	497688.4815	4524623.632	265	496396.9815	4523030.432
118	497675.6015	4524569.872	266	496382.2815	4523023.432
119	497658.2415	4524572.392	267	496353.5815	4523053.532
120	497624.9215	4524551.952	268	496354.9815	4523034.632
121	497525.5215	4524444.712	269	496345.8815	4523004.532
122	497448.5215	4524390.112	270	496364.0815	4522973.032
123	497398.4015	4524427.632	271	496378.7815	4522931.032
124	497383.2815	4524374.712	272	496394.8815	4522896.032
125	497378.8015	4524342.932	273	496410.9815	4522844.232
126	497367.8815	4524319.132	274	496524.3815	4522795.932
127	497325.8815	4524266.212	275	496518.7815	4522781.232
128	497299.5615	4524248.572	276	496428.4815	4522806.432
129	497261.6215	4524187.812	277	496473.2815	4522721.032
130	497233.6215	4524123.132	278	496489.3815	4522726.632
131	497232.9215	4524096.532	279	496518.7815	4522707.032

132	497271.4215	4524184.032	280	496560.0815	4522690.232
133	497305.7215	4524231.632	281	496611.1815	4522665.732
134	497322.5215	4524209.932	282	496666.4815	4522626.532
135	497433.1215	4524215.532	283	496637.0815	4522618.132
136	497491.9215	4524195.232	284	496592.2815	4522583.832
137	497586.2815	4524192.572	285	496583.1815	4522585.932
138	497706.9615	4524153.652	286	496575.4815	4522578.232
139	497668.6015	4524148.052	287	496571.9815	4522564.932
140	497634.1615	4524155.612	288	496561.4815	4522560.032
141	497599.7215	4524151.412	289	496583.8815	4522545.332
142	497589.0815	4524141.332	290	496597.1815	4522539.032
143	497551.2815	4524147.772	291	496565.6815	4522539.732
144	497491.6415	4524099.052	292	496585.2815	4522511.732
145	497470.0815	4524129.852	293	496556.5815	4522512.432
146	497410.7215	4524133.492	294	496571.4215	4522466.092
147	497378.8015	4524112.352	295	496578.2815	4522455.172
148	497355.5615	4524041.792			

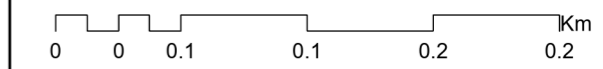
ZONA ME PËRPARËSI ZHVILLIMIN E EKONOMISË MALORE
ZONA 8, NJËSIA ADMINISTRATIVE PERONDI, BASHKIA KUÇOVË, QARKU BERAT



Njësia Administrative	Zona	Sipërfaqja (ha)
Kozarë	Zona 1	43.63
Kozarë	Zona 2	8.08
Kozarë	Zona 3	38.32
Perondi	Zona 4	4.68
Perondi	Zona 5	10.21
Perondi	Zona 6	5.10
Perondi	Zona 7	88.80
Perondi	Zona 8	7.44
Kozarë	Zona 9	6.64
Perondi, Lumas	Zona 10	1.76
Perondi, Lumas	Zona 11	0.96
Perondi, Lumas	Zona 12	8.05
Lumas	Zona 13	14.63
Lumas	Zona 14	14.85
Lumas	Zona 15	0.92
Lumas	Zona 16	31.73
Kozarë	Zona 17	0.84
Perondi	Zona 18	9.84
Lumas	Zona 19	36.90



1:3,000



Legjendë

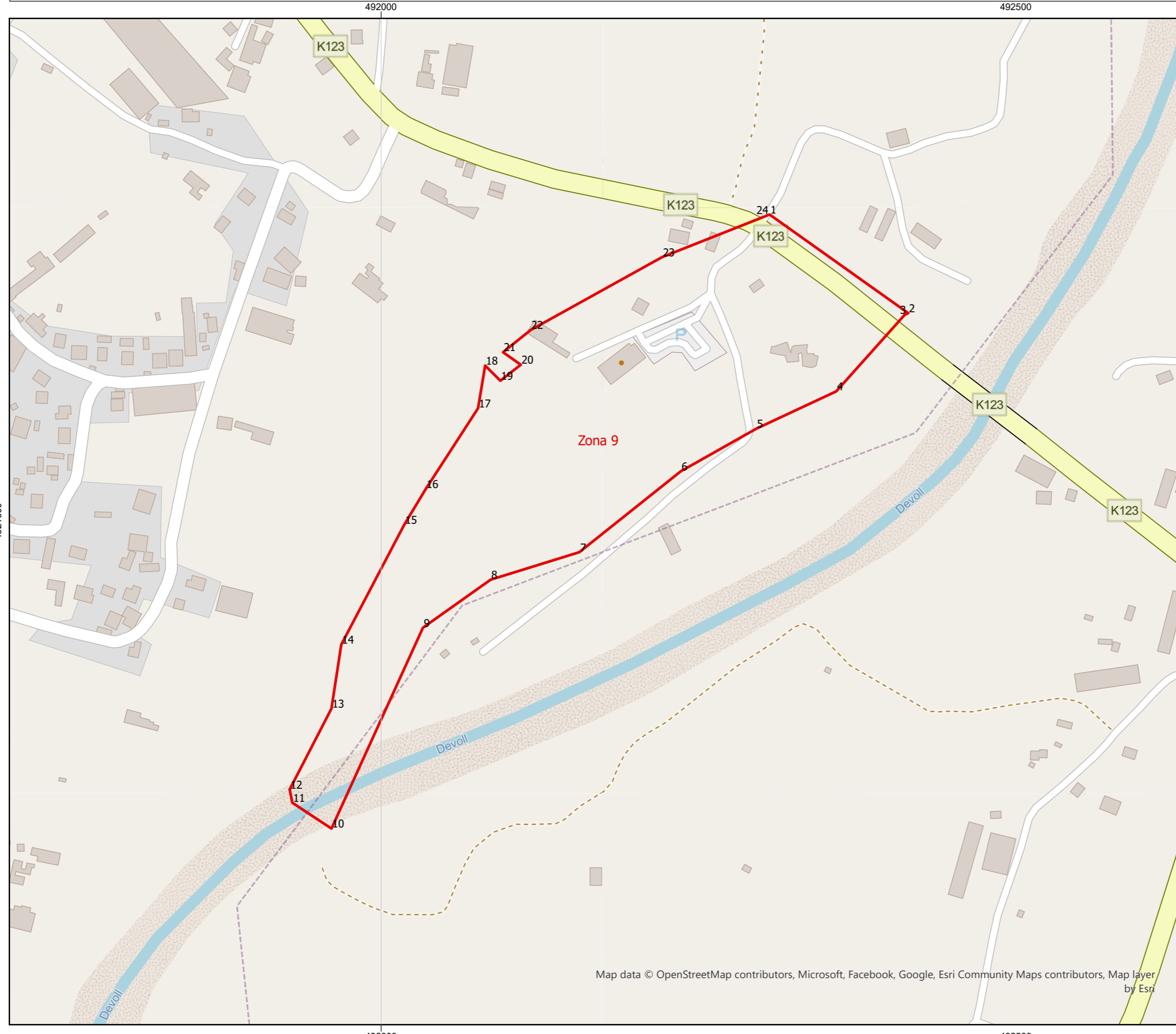
- Zona me përparësi zhvillimin e ekonomisë malore
- Ndërtesa
- Bashkia Kuçovë
- Izoipse
- Kategoritë e Rrjetit Rrugor
 - Kategoria C. Rruge Interurbane Dytesore

*Zona 8 ndodhet në territorin e Njesisë Administrative Perondi, me sipërfaqe prej 7.44 ha

**Sistemi Koordinativ: KRGJSH (Korniza Referuese Gjeodezike Shqiptare) EPSG 6870

Zona 8					
Njësia Administrative Perondi					
Nr.	Koordinata X	Koordinata Y	Nr.	Koordinata X	Koordinata Y
1	496460.7641	4523015.951	23	496766.6641	4522635.851
2	496466.3641	4523021.551	24	496737.9641	4522655.451
3	496468.4641	4523007.551	25	496727.4641	4522615.551
4	496490.1641	4522996.351	26	496711.3641	4522606.451
5	496540.5641	4522932.651	27	496699.4641	4522616.251
6	496584.6641	4522920.051	28	496635.7641	4522616.251
7	496604.2641	4522948.751	29	496665.1641	4522626.051
8	496630.1641	4522931.251	30	496611.2641	4522665.951
9	496658.1641	4522940.351	31	496560.1641	4522692.551
10	496725.3641	4522841.651	32	496571.3641	4522710.051
11	496754.7641	4522823.451	33	496576.2641	4522745.051
12	496764.5641	4522790.551	34	496561.5641	4522783.551
13	496801.6641	4522815.051	35	496544.0641	4522777.251
14	496803.7641	4522864.751	36	496525.1641	4522784.251
15	496829.6641	4522852.851	37	496532.1641	4522798.951
16	496852.0641	4522822.051	38	496516.0641	4522820.651
17	496856.2641	4522786.351	39	496504.1641	4522845.151
18	496868.1641	4522769.551	40	496510.4641	4522939.651
19	496876.5641	4522744.351	41	496483.1641	4522962.051
20	496870.2641	4522710.751	42	496484.5641	4522988.651
21	496821.9641	4522700.951	43	496467.7641	4522998.451
22	496795.3641	4522686.251	44	496460.7641	4523015.951

ZONA ME PËRPARËSI ZHVILLIMIN E EKONOMISË MALORE
ZONA 9, NJËSIA ADMINISTRATIVE KOZARË, BASHKIA KUÇOVË, QARKU BERAT



Njësia Administrative	Zona	Sipërfaqja (ha)
Kozarë	Zona 1	43.63
Kozarë	Zona 2	8.08
Kozarë	Zona 3	38.32
Perondi	Zona 4	4.68
Perondi	Zona 5	10.21
Perondi	Zona 6	5.10
Perondi	Zona 7	88.80
Perondi	Zona 8	7.44
Kozarë	Zona 9	6.64
Perondi, Lumas	Zona 10	1.76
Perondi, Lumas	Zona 11	0.96
Perondi, Lumas	Zona 12	8.05
Lumas	Zona 13	14.63
Lumas	Zona 14	14.85
Lumas	Zona 15	0.92
Lumas	Zona 16	31.73
Kozarë	Zona 17	0.84
Perondi	Zona 18	9.84
Lumas	Zona 19	36.90



1:3,000



Legjendë

- Zona me përparësi zhvillimin e ekonomisë malore
- Ndërtesa
- Bashkia Kuçovë
- Izoipse
- Kategoritë e Rrjetit Rugor**
- Kategoria C. Rruge Interurbane Dytesore
- E. Rruge Urbane Dytesore
- Kategoria F. Rruge Lokale

*Zona 9 ndodhet në territorin e Njesisë Administrative Kozarë, me sipërfaqe prej 6.64 ha

**Sistemi Koordinativ: KRGJSH (Korniza Referuese Gjeodezike Shqiptare)/ EPSG 6870

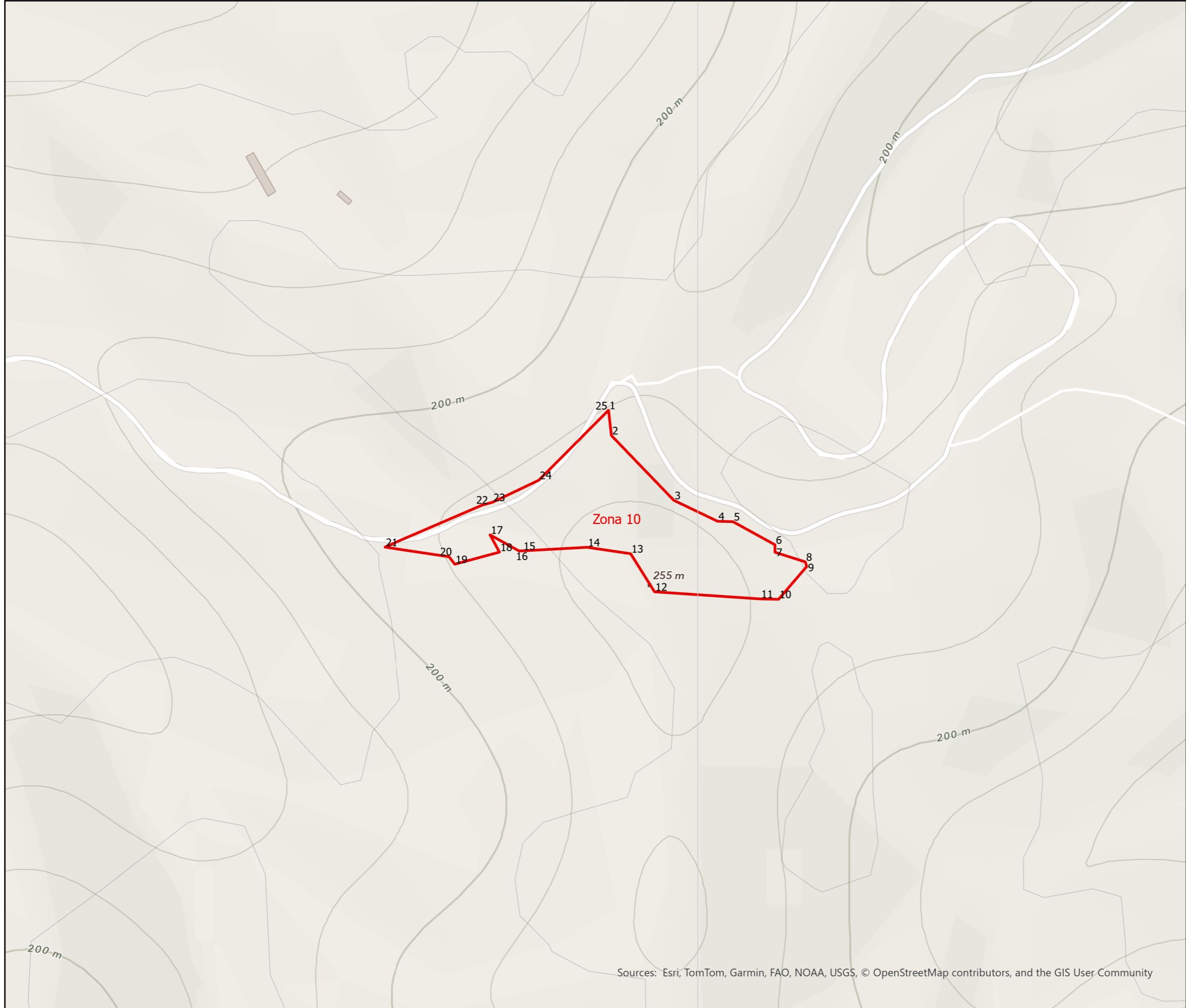
Zona 9**Njësia Administrative Kozarë**

Nr.	Koordinata X	Koordinata Y
1	492306.0278	4521741.599
2	492415.2278	4521663.899
3	492412.4278	4521662.499
4	492358.5278	4521602.299
5	492295.5278	4521572.899
6	492236.0278	4521539.299
7	492156.2278	4521475.599
8	492086.2278	4521453.899
9	492033.0278	4521416.099
10	491960.9278	4521257.899
11	491930.1278	4521278.199
12	491928.0278	4521288.699
13	491960.9278	4521352.399
14	491968.6278	4521402.799
15	492018.3278	4521497.299
16	492035.1278	4521525.299
17	492076.4278	4521588.999
18	492082.0278	4521622.599
19	492093.9278	4521610.699
20	492110.0278	4521623.299
21	492096.0278	4521633.099
22	492117.7278	4521650.599
23	492221.3278	4521707.999
24	492306.0278	4521741.599

ZONA ME PËRPARËSI ZHVILLIMIN E EKONOMISË MALORE
ZONA 10, NJËSIA ADMINISTRATIVE PERONDI DHE LUMAS, BASHKIA KUÇOVË, QARKU BERAT

495500

496000



4518500

4518500

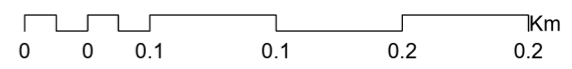


BASHKIA KUÇOVË

Njësia Administrative	Zona	Sipërfaqja (ha)
Kozarë	Zona 1	43.63
Kozarë	Zona 2	8.08
Kozarë	Zona 3	38.32
Perondi	Zona 4	4.68
Perondi	Zona 5	10.21
Perondi	Zona 6	5.10
Perondi	Zona 7	88.80
Perondi	Zona 8	7.44
Kozarë	Zona 9	6.64
Perondi, Lumas	Zona 10	1.76
Perondi, Lumas	Zona 11	0.96
Perondi, Lumas	Zona 12	8.05
Lumas	Zona 13	14.63
Lumas	Zona 14	14.85
Lumas	Zona 15	0.92
Lumas	Zona 16	31.73
Kozarë	Zona 17	0.84
Perondi	Zona 18	9.84
Lumas	Zona 19	36.90



1:3,000



Legjendë

- Zona me përparësi zhvillimin e ekonomisë malore
- Ndërtesa
- Bashkia Kuçovë
- Izoipse
- Kategoritë e Rrjetit Rrugor**
- Kategoria C. Rruge Interurbane Dytesore

*Zona 10 ndodhet në territorin e Njësive Administrative Perondi dhe Lumas, me sipërfaqe prej 1.76ha

**Sistemi Koordinativ: KRGJSH (Korniza Referuese Gjeodezike Shqiptare) EPSG 6870

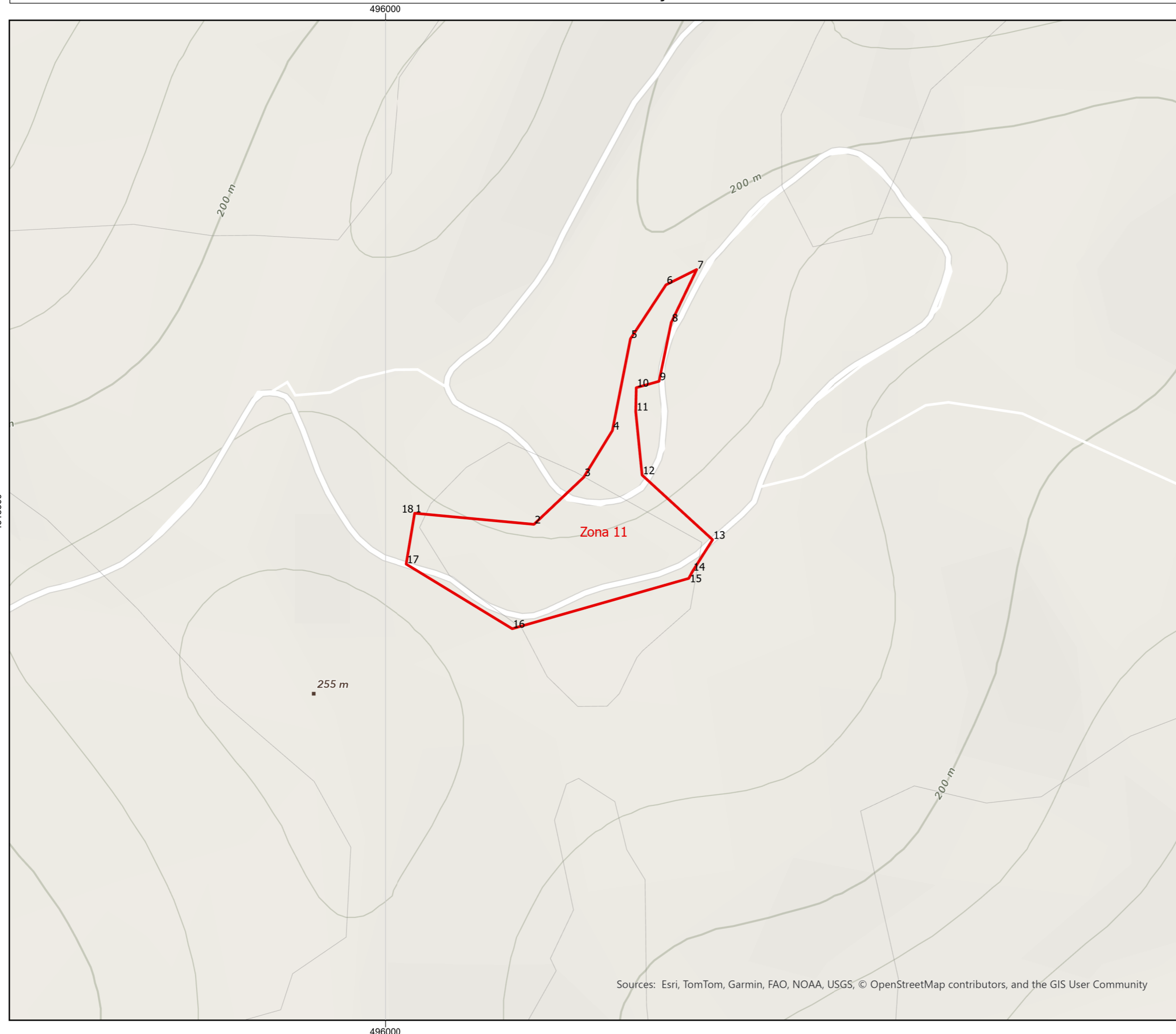
495500

496000

Zona 10**Njësia Administrative Perondi dhe Lumas**

Nr.	Koordinata X	Koordinata Y
1	495929.8951	4518541.645
2	495932.1351	4518521.765
3	495981.1351	4518470.805
4	496015.5751	4518454.285
5	496027.6151	4518454.005
6	496060.6551	4518435.805
7	496060.6551	4518429.925
8	496084.4551	4518422.365
9	496085.5751	4518418.725
10	496063.4551	4518392.965
11	496049.1751	4518393.245
12	495966.0151	4518398.845
13	495947.2551	4518428.805
14	495913.0951	4518433.845
15	495862.4151	4518431.045
16	495859.4751	4518431.045
17	495836.7951	4518443.645
18	495844.2151	4518430.065
19	495809.0751	4518420.545
20	495804.5951	4518426.425
21	495753.9151	4518433.985
22	495830.6351	4518467.025
23	495838.7551	4518469.265
24	495875.1551	4518486.625
25	495929.8951	4518541.645

ZONA ME PËRPARËSI ZHVILLIMIN E EKONOMISË MALORE
ZONA 11, NJËSIA ADMINISTRATIVE PERONDI DHE LUMAS, BASHKIA KUÇOVË, QARKU BERAT

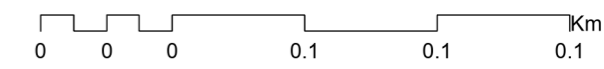


BASHKIA
KUÇOVË

Njësia Administrative	Zona	Sipërfaqja (ha)
Kozarë	Zona 1	43.63
Kozarë	Zona 2	8.08
Kozarë	Zona 3	38.32
Perondi	Zona 4	4.68
Perondi	Zona 5	10.21
Perondi	Zona 6	5.10
Perondi	Zona 7	88.80
Perondi	Zona 8	7.44
Kozarë	Zona 9	6.64
Perondi, Lumas	Zona 10	1.76
Perondi, Lumas	Zona 11	0.96
Perondi, Lumas	Zona 12	8.05
Lumas	Zona 13	14.63
Lumas	Zona 14	14.85
Lumas	Zona 15	0.92
Lumas	Zona 16	31.73
Kozarë	Zona 17	0.84
Perondi	Zona 18	9.84
Lumas	Zona 19	36.90



1:2,000



Legjendë

- Zona me përparësi zhvillimin e ekonomisë malore
- Bashkia Kuçovë
- Izoipse
- Kategoritë e Rrjetit Rrugor**
- Kategoria C. Rruge Interurbane Dytësore

*Zona 11 ndodhet në territorin e Njesisë Administrative Perondi dhe Lumas, me sipërfaqe prej 0.96 ha


**Sistemi Koordinativ: KRGJSH (Korniza Referuese Gjeodezike Shqiptare) EPSG 6870

Zona 11**Njësia Administrative Perondi dhe Lumas**

Nr.	Koordinata X	Koordinata Y
1	496015.6418	4518499.552
2	496078.6418	4518493.672
3	496104.9618	4518518.592
4	496120.0818	4518543.232
5	496129.6018	4518591.672
6	496148.3618	4518620.232
7	496164.6018	4518628.352
8	496151.1618	4518600.352
9	496144.7218	4518569.272
10	496132.6818	4518565.912
11	496132.4018	4518553.312
12	496135.7618	4518519.712
13	496173.0018	4518485.552
14	496162.3618	4518468.752
15	496160.4018	4518465.112
16	496067.1618	4518438.512
17	496011.1618	4518472.672
18	496015.6418	4518499.552


ZONA ME PËRPARËSI ZHVILLIMIN E EKONOMISË MALORE
ZONA 12, NJËSIA ADMINISTRATIVE PERONDI DHE LUMAS, BASHKIA KUÇOVË, QARKU BERAT






BASHKIA KUÇOVË

Njësia Administrative	Zona	Sipërfaqja (ha)
Kozarë	Zona 1	43.63
Kozarë	Zona 2	8.08
Kozarë	Zona 3	38.32
Perondi	Zona 4	4.68
Perondi	Zona 5	10.21
Perondi	Zona 6	5.10
Perondi	Zona 7	88.80
Perondi	Zona 8	7.44
Kozarë	Zona 9	6.64
Perondi, Lumas	Zona 10	1.76
Perondi, Lumas	Zona 11	0.96
Perondi, Lumas	Zona 12	8.05
Lumas	Zona 13	14.63
Lumas	Zona 14	14.85
Lumas	Zona 15	0.92
Lumas	Zona 16	31.73
Kozarë	Zona 17	0.84
Perondi	Zona 18	9.84
Lumas	Zona 19	36.90



1:3,000



Legjendë

- Zona me përparësi zhvillimin e ekonomisë malore
- Ndërtesa
- Bashkia Kuçovë
- Izoipse
- Kategoritë e Rrjetit Rrugor**
- Kategoria C. Rruge Interurbane Dytesore

*Zona 12 ndodhet në territorin e Njësive Administrative Perondi dhe Lumas, me sipërfaqe prej 8.05 ha

**Sistemi Koordinativ: KRGJSH (Korniza Referuese Gjeodezike Shqiptare) EPSG 6870

Sources: Esri, TomTom, Garmin, FAO, NOAA, USGS, © OpenStreetMap contributors, and the GIS User Community

Zona 12**Njësia Administrative Perondi dhe Lumas**

Nr.	Koordinata X	Koordinata Y	Nr.	Koordinata X	Koordinata Y
1	496186.3575	4518641.932	26	496744.2575	4518549.532
2	496195.1775	4518754.212	27	496744.3975	4518542.672
3	496202.1775	4518759.812	28	496750.1375	4518519.432
4	496236.4775	4518780.112	29	496765.1175	4518516.912
5	496454.5975	4518859.912	30	496767.7775	4518513.832
6	496510.0375	4518894.632	31	496762.4575	4518512.432
7	496532.1575	4518914.232	32	496746.3575	4518504.032
8	496534.6775	4518892.392	33	496730.2575	4518446.632
9	496551.1975	4518887.352	34	496719.0575	4518472.532
10	496552.8775	4518893.792	35	496691.0575	4518483.732
11	496570.5175	4518897.712	36	496664.4575	4518533.432
12	496586.7575	4518857.392	37	496646.2575	4518536.232
13	496600.8975	4518786.972	38	496601.4575	4518595.032
14	496626.0975	4518747.492	39	496565.0575	4518694.432
15	496635.6175	4518747.772	40	496563.6575	4518711.232
16	496668.0975	4518731.252	41	496538.4575	4518709.832
17	496667.8175	4518712.212	42	496520.2575	4518758.132
18	496662.2175	4518706.052	43	496455.1575	4518754.632
19	496657.5975	4518685.612	44	496427.1575	4518746.232
20	496679.1575	4518664.892	45	496376.0575	4518711.932
21	496693.8575	4518635.492	46	496282.2575	4518636.332
22	496700.8575	4518601.332	47	496237.4575	4518648.232
23	496714.8575	4518590.692	48	496210.8575	4518638.432
24	496726.3375	4518566.472	49	496186.3575	4518641.932
25	496728.2975	4518557.232			

ZONA ME PËRPARËSI ZHVILLIMIN E EKONOMISË MALORE
ZONA 13, NJËSIA ADMINISTRATIVE LUMAS, BASHKIA KUÇOVË, QARKU BERAT

499000



4519500

4519500

499000

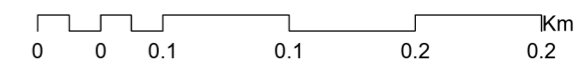


BASHKIA
KUÇOVË



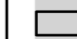



Njësia Administrative	Zona	Sipërfaqja (ha)
Kozarë	Zona 1	43.63
Kozarë	Zona 2	8.08
Kozarë	Zona 3	38.32
Perondi	Zona 4	4.68
Perondi	Zona 5	10.21
Perondi	Zona 6	5.10
Perondi	Zona 7	88.80
Perondi	Zona 8	7.44
Kozarë	Zona 9	6.64
Perondi, Lumas	Zona 10	1.76
Perondi, Lumas	Zona 11	0.96
Perondi, Lumas	Zona 12	8.05
Lumas	Zona 13	14.63
Lumas	Zona 14	14.85
Lumas	Zona 15	0.92
Lumas	Zona 16	31.73
Kozarë	Zona 17	0.84
Perondi	Zona 18	9.84
Lumas	Zona 19	36.90



1:3,000



Legjendë

-  Zona me përparësi zhvillimin e ekonomisë malore
-  Ndërtesa
-  Bashkia Kuçovë
-  Izoipse
- Kategoritë e Rrjetit Rrugor**
-  Kategoria C. Rruge Interurbane Dytësore
-  Kategoria F. Rruge Lokale

*Zona 13 ndodhet në territorin e Njësise Administrative Lumas, me sipërfaqe prej 14.63 ha

**Sistemi Koordinativ: KRGJSH (Korniza Referuese Gjeodezike Shqiptare) EPSG 6870

Zona 13**Njësia Administrative Lumas**

Nr.	Koordinata X	Koordinata Y
1	498761.8131	4519509.064
2	498794.0131	4519667.264
3	498847.2131	4519695.964
4	498871.0131	4519719.764
5	498889.9131	4519735.164
6	498935.4131	4519756.164
7	499046.0131	4519777.164
8	499103.4131	4519817.064
9	499160.8131	4519794.664
10	499153.8131	4519780.664
11	499130.0131	4519784.864
12	499125.8131	4519746.364
13	499147.5131	4519741.464
14	499099.9131	4519735.864
15	499081.7131	4519733.764
16	499079.6131	4519712.064
17	499100.6131	4519714.164
18	499125.8131	4519716.964
19	499135.6131	4519679.164
20	499164.3131	4519646.964
21	499162.9131	4519621.764
22	499221.0131	4519578.364
23	499242.0131	4519576.264
24	499242.0131	4519513.964
25	499262.3131	4519434.164
26	499258.8131	4519342.464
27	499158.7131	4519352.264
28	498871.7131	4519448.164
29	498761.8131	4519509.064

ZONA ME PËRPARËSI ZHVILLIMIN E EKONOMISË MALORE
ZONA 14, NJËSIA ADMINISTRATIVE LUMAS, BASHKIA KUÇOVË, QARKU BERAT



Njësia Administrative	Zona	Sipërfaqja (ha)
Kozarë	Zona 1	43.63
Kozarë	Zona 2	8.08
Kozarë	Zona 3	38.32
Perondi	Zona 4	4.68
Perondi	Zona 5	10.21
Perondi	Zona 6	5.10
Perondi	Zona 7	88.80
Perondi	Zona 8	7.44
Kozarë	Zona 9	6.64
Perondi, Lumas	Zona 10	1.76
Perondi, Lumas	Zona 11	0.96
Perondi, Lumas	Zona 12	8.05
Lumas	Zona 13	14.63
Lumas	Zona 14	14.85
Lumas	Zona 15	0.92
Lumas	Zona 16	31.73
Kozarë	Zona 17	0.84
Perondi	Zona 18	9.84
Lumas	Zona 19	36.90



1:3,000



Legjendë

- Zona me përparësi zhvillimin e ekonomisë malore
- Ndërtesa
- Bashkia Kuçovë
- Izoipse

Kategoritë e Rrjetit Rrugor

- Kategoria C. Rruge Interurbane Dytesore
- Kategoria F. Rruge Lokale

*Zona 14 ndodhet në territorin e Njësive Administrative Lumas, me sipërfaqe prej 14.85 ha

**Sistemi Koordinativ: KRGJSH (Korniza Referuese Gjeodezike Shqiptare) EPSG 6870

Zona 14**Njësia Administrative Lumas**

Nr.	Koordinata X	Koordinata Y	Nr.	Koordinata X	Koordinata Y
1	498761.8131	4519506.964	20	499099.9131	4519105.864
2	498875.4931	4519444.244	21	499121.7531	4519111.184
3	499180.2731	4519343.584	22	499124.8331	4519095.224
4	499144.1531	4519341.064	23	499031.5931	4519092.424
5	499192.7331	4519287.164	24	498967.8931	4519149.684
6	499313.6931	4519218.004	25	498916.9331	4519139.884
7	499336.9331	4519135.124	26	498913.7131	4519142.964
8	499287.0931	4519196.724	27	498861.2131	4519121.964
9	499281.7731	4519201.204	28	498832.5131	4519102.364
10	499207.4331	4519257.904	29	498686.9131	4519077.164
11	499155.6331	4519223.464	30	498652.6131	4519094.664
12	499174.1131	4519199.664	31	498648.4131	4519128.964
13	499161.2331	4519189.304	32	498668.0131	4519294.864
14	499139.9531	4519197.424	33	498673.6131	4519307.464
15	499099.6331	4519190.704	34	498711.4131	4519360.664
16	499057.6331	4519187.344	35	498734.5131	4519413.864
17	499004.7131	4519166.344	36	498740.8131	4519464.964
18	499002.4731	4519146.744	37	498761.8131	4519506.964
19	499053.9931	4519112.864			

ZONA ME PËRPARËSI ZHVILLIMIN E EKONOMISË MALORE
ZONA 15, NJËSIA ADMINISTRATIVE LUMAS, BASHKIA KUÇOVË, QARKU BERAT



Njësia Administrative	Zona	Sipërfaqja (ha)
Kozarë	Zona 1	43.63
Kozarë	Zona 2	8.08
Kozarë	Zona 3	38.32
Perondi	Zona 4	4.68
Perondi	Zona 5	10.21
Perondi	Zona 6	5.10
Perondi	Zona 7	88.80
Perondi	Zona 8	7.44
Kozarë	Zona 9	6.64
Perondi, Lumas	Zona 10	1.76
Perondi, Lumas	Zona 11	0.96
Perondi, Lumas	Zona 12	8.05
Lumas	Zona 13	14.63
Lumas	Zona 14	14.85
Lumas	Zona 15	0.92
Lumas	Zona 16	31.73
Kozarë	Zona 17	0.84
Perondi	Zona 18	9.84
Lumas	Zona 19	36.90



1:2,000



Legjendë

- Zona me përparësi zhvillimin e ekonomisë malore
- Ndërtesa
- Bashkia Kuçovë
- Izoipse

Kategoritë e Rrjetit Rrugor

- Kategoria C. Rruge Interurbane Dytesore
- Kategoria F. Rruge Lokale

*Zona 15 ndodhet në territorin e Njësise Administrative Lumas, me sipërfaqe prej 0.92 ha

**Sistemi Koordinativ: KRGJSH (Korniza Referuese Gjeodezike Shqiptare) EPSG 6870

Zona 15**Njësia Administrative Lumas**

Nr.	Koordinata X	Koordinata Y
1	498535.4331	4519030.964
2	498549.7131	4519020.884
3	498556.7131	4519018.364
4	498551.6731	4518989.804
5	498576.5931	4518962.084
6	498549.4331	4518908.884
7	498547.1931	4518900.484
8	498541.5931	4518858.764
9	498515.2731	4518807.944
10	498510.7931	4518807.104
11	498503.7931	4518846.024
12	498482.5131	4518860.864
13	498535.4331	4519030.964

ZONA ME PËRPARËSI ZHVILLIMIN E EKONOMISË MALORE

ZONA 16, NJËSIA ADMINISTRATIVE LUMAS, BASHKIA KUÇOVË, QARKU BERAT



501000 501500 502000 502500

4523000

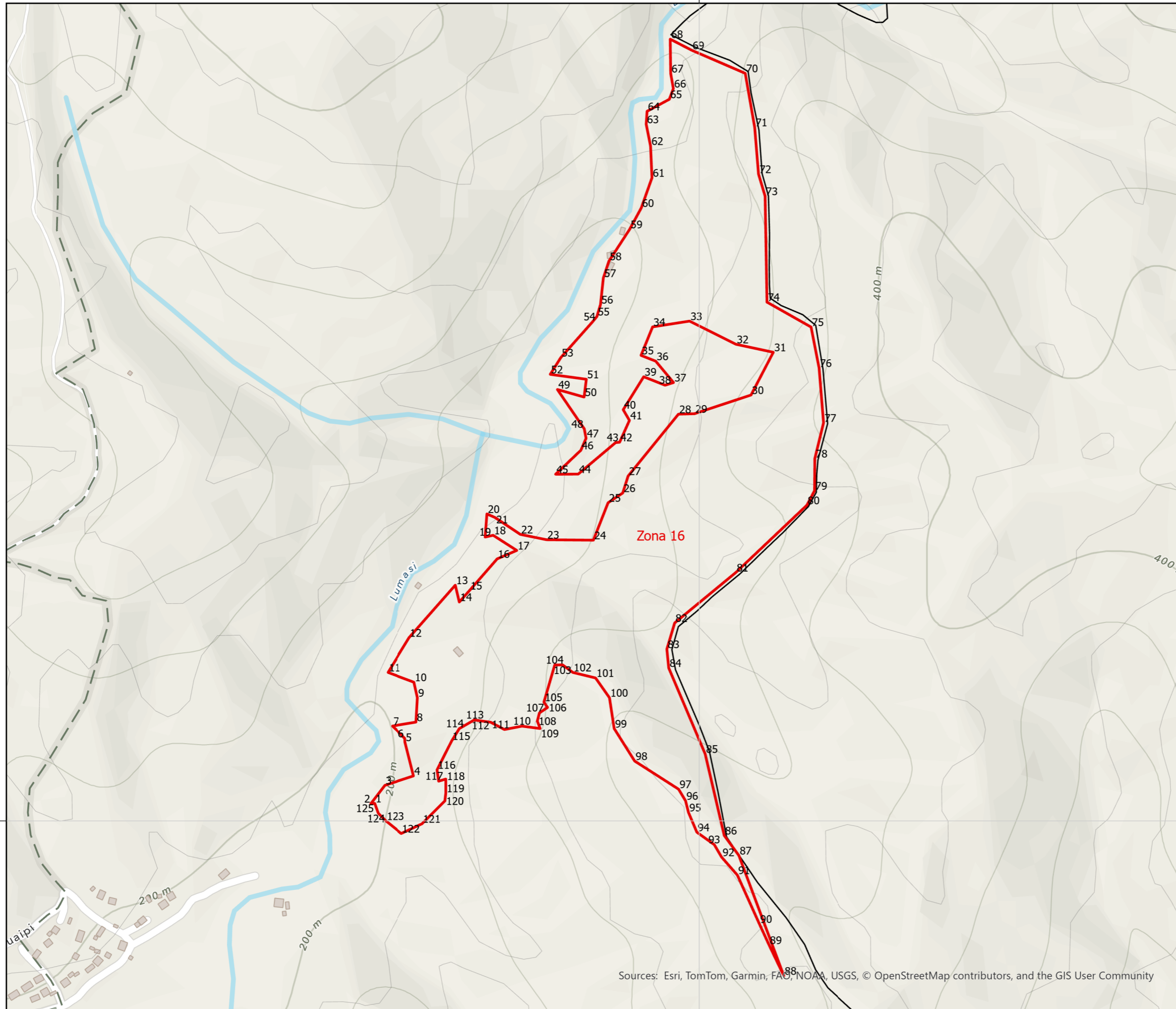
4522500

4522000

4523000

4522500

4522000



Sources: Esri, TomTom, Garmin, FAO, NOAA, USGS, © OpenStreetMap contributors, and the GIS User Community

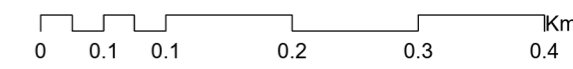


BASHKIA KUÇOVË

Njësia Administrative	Zona	Sipërfaqja (ha)
Kozarë	Zona 1	43.63
Kozarë	Zona 2	8.08
Kozarë	Zona 3	38.32
Perondi	Zona 4	4.68
Perondi	Zona 5	10.21
Perondi	Zona 6	5.10
Perondi	Zona 7	88.80
Perondi	Zona 8	7.44
Kozarë	Zona 9	6.64
Perondi, Lumas	Zona 10	1.76
Perondi, Lumas	Zona 11	0.96
Perondi, Lumas	Zona 12	8.05
Lumas	Zona 13	14.63
Lumas	Zona 14	14.85
Lumas	Zona 15	0.92
Lumas	Zona 16	31.73
Kozarë	Zona 17	0.84
Perondi	Zona 18	9.84
Lumas	Zona 19	36.90



1:6,000



Legjendë

- Zona me përparësi zhvillimin e ekonomisë malore
- Ndërtesa
- Bashkia Kuçovë
- Izoipse

Kategoritë e Rrjetit Rrugor

- Kategoria F. Rruge Lokale

*Zona 16 ndodhet në territorin e Njësise Administrative Lumas, me sipërfaqe prej 31.73 ha

**Sistemi Koordinativ: KRGJSH (Korniza Referuese Gjeodezike Shqiptare) EPSG 6870

501000 501500 502000 502500

Zona 16
Njësia Administrative Lumas

Nr.	Koordinata X	Koordinata Y	Nr.	Koordinata X	Koordinata Y
1	501489.2699	4522027.556	64	501918.0899	4523115.496
2	501483.1099	4522026.996	65	501953.0899	4523134.396
3	501505.2299	4522055.836	66	501959.3899	4523151.196
4	501550.8699	4522070.676	67	501955.1899	4523174.996
5	501537.4299	4522123.876	68	501954.4899	4523228.896
6	501537.1499	4522129.756	69	501988.0899	4523211.536
7	501517.2699	4522149.076	70	502072.3699	4523175.136
8	501554.7899	4522155.236	71	502087.2099	4523090.296
9	501557.0299	4522193.596	72	502093.2299	4523016.796
10	501551.5699	4522217.956	73	502103.5899	4522982.076
11	501510.2699	4522233.356	74	502106.5299	4522815.476
12	501543.8699	4522287.956	75	502175.8299	4522776.276
13	501616.6699	4522370.556	76	502188.4299	4522711.876
14	501622.9699	4522343.956	77	502195.4299	4522625.776
15	501639.0699	4522362.156	78	502181.7099	4522569.496
16	501682.4699	4522411.856	79	502181.2899	4522519.096
17	501713.2699	4522425.156	80	502169.2499	4522496.276
18	501676.1699	4522448.956	81	502057.5299	4522390.436
19	501663.5699	4522446.156	82	501961.4899	4522311.196
20	501666.3699	4522482.556	83	501949.1699	4522270.036
21	501678.9699	4522476.956	84	501952.1099	4522240.356
22	501718.8699	4522450.356	85	502009.3699	4522105.256
23	501760.1699	4522441.956	86	502039.3299	4521977.016
24	501833.6699	4522441.256	87	502062.3599	4521945.586
25	501856.7699	4522500.056	88	502133.0599	4521756.306
26	501879.8699	4522515.456	89	502109.8199	4521804.886
27	501888.2699	4522542.056	90	502094.5599	4521838.066
28	501967.3699	4522639.356	91	502060.0097	4521914.699
29	501992.5699	4522640.056	92	502035.2297	4521942.979
30	502081.4699	4522669.456	93	502023.7497	4521962.579
31	502116.4699	4522736.656	94	501996.3097	4521982.179
32	502057.6699	4522749.256	95	501983.1497	4522013.259
33	501984.8699	4522785.656	96	501978.5297	4522031.599
34	501926.7699	4522776.556	97	501967.6097	4522049.799
35	501908.5699	4522731.756	98	501898.5897	4522094.039
36	501931.6699	4522722.656	99	501866.3897	4522145.139
37	501959.6699	4522689.056	100	501858.9662	4522193.58
38	501946.3699	4522684.856	101	501837.1262	4522224.66
39	501912.7699	4522698.156	102	501801.4262	4522233.34
40	501880.5699	4522646.356	103	501785.3262	4522245.24
41	501890.3699	4522629.556	104	501773.0062	4522245.1

42	501874.9699	4522595.256	105	501755.9262	4522186.58
43	501868.6699	4522594.696	106	501761.6662	4522178.32
44	501809.8699	4522545.136	107	501748.9262	4522169.78
45	501774.3099	4522544.856	108	501745.5662	4522156.9
46	501814.0699	4522582.656	109	501750.0462	4522145.14
47	501822.1899	4522601.416	110	501721.6262	4522148.92
48	501819.3899	4522616.256	111	501693.9062	4522143.6
49	501777.1099	4522678.136	112	501672.4162	4522155.01
50	501819.1099	4522666.236	113	501646.5162	4522158.65
51	501822.6099	4522694.236	114	501622.9962	4522145.07
52	501765.9099	4522701.936	115	501610.9562	4522125.61
53	501782.5699	4522728.396	116	501587.9962	4522080.32
54	501832.2699	4522784.396	117	501590.5162	4522062.4
55	501839.2699	4522792.936	118	501601.7162	4522065.76
56	501844.8699	4522811.696	119	501601.7162	4522043.64
57	501849.3499	4522853.416	120	501600.3162	4522031.32
58	501858.0299	4522879.736	121	501564.4762	4521995.48
59	501890.7899	4522930.136	122	501531.5762	4521980.08
60	501908.9899	4522963.596	123	501506.9362	4521999.96
61	501925.7899	4523010.916	124	501494.8962	4522012
62	501923.5499	4523060.896	125	501489.2699	4522027.556
63	501916.6899	4523095.196			

ZONA ME PËRPARËSI ZHVILLIMIN E EKONOMISË MALORE
ZONA 17, NJËSIA ADMINISTRATIVE KOZARË, BASHKIA KUÇOVË, QARKU BERAT

487500



4524000

4524000

487500



Njësia Administrative	Zona	Sipërfaqja (ha)
Kozarë	Zona 1	43.63
Kozarë	Zona 2	8.08
Kozarë	Zona 3	38.32
Perondi	Zona 4	4.68
Perondi	Zona 5	10.21
Perondi	Zona 6	5.10
Perondi	Zona 7	88.80
Perondi	Zona 8	7.44
Kozarë	Zona 9	6.64
Perondi, Lumas	Zona 10	1.76
Perondi, Lumas	Zona 11	0.96
Perondi, Lumas	Zona 12	8.05
Lumas	Zona 13	14.63
Lumas	Zona 14	14.85
Lumas	Zona 15	0.92
Lumas	Zona 16	31.73
Kozarë	Zona 17	0.84
Perondi	Zona 18	9.84
Lumas	Zona 19	36.90



1:2,000



Legjendë

- Zona me përparësi zhvillimin e ekonomisë malore
- Ndërtesa
- Bashkia Kuçovë
- Izoipse

Kategoritë e Rrjetit Rrugor

- Kategoria C. Rruge Interurbane Dytesore
- Kategoria F. Rruge Lokale

*Zona 17 ndodhet në territorin e Njësies Administrative Kozarë, me sipërfaqe prej 0.84 ha

**Sistemi Koordinativ: KRGJSH (Korniza Referuese Gjeodezike Shqiptare) EPSG 6870

Zona 17**Njësia Administrative Kozarë**

Nr.	Koordinata X	Koordinata Y
1	487449.4323	4523969.753
2	487506.2023	4523942.943
3	487546.8023	4523935.243
4	487545.6823	4523912.423
5	487560.3823	4523925.863
6	487580.2623	4523913.963
7	487615.2623	4523915.783
8	487653.7623	4523908.643
9	487648.7223	4523895.343
10	487566.4023	4523865.103
11	487545.8223	4523864.823
12	487520.6923	4523890.793
13	487507.8123	4523908.713
14	487483.8723	4523926.633
15	487404.0723	4523948.473
16	487444.2523	4523958.133
17	487447.0523	4523962.753
18	487449.4323	4523969.753

ZONA ME PËRPARËSI ZHVILLIMIN E EKONOMISË MALORE
ZONA 18, NJËSIA ADMINISTRATIVE PERONDI, BASHKIA KUÇOVË, QARKU BERAT

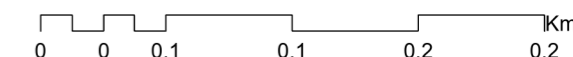


BASHKIA
KUÇOVË

Njësia Administrative	Zona	Sipërfaqja (ha)
Kozarë	Zona 1	43.63
Kozarë	Zona 2	8.08
Kozarë	Zona 3	38.32
Perondi	Zona 4	4.68
Perondi	Zona 5	10.21
Perondi	Zona 6	5.10
Perondi	Zona 7	88.80
Perondi	Zona 8	7.44
Kozarë	Zona 9	6.64
Perondi, Lumas	Zona 10	1.76
Perondi, Lumas	Zona 11	0.96
Perondi, Lumas	Zona 12	8.05
Lumas	Zona 13	14.63
Lumas	Zona 14	14.85
Lumas	Zona 15	0.92
Lumas	Zona 16	31.73
Kozarë	Zona 17	0.84
Perondi	Zona 18	9.84
Lumas	Zona 19	36.90



1:3,000



Legjendë

- Zona me përparësi zhvillimin e ekonomisë malore
 - Ndërtesa
 - Bashkia Kuçovë
 - Izoipse
- Kategoritë e Rrjetit Rrugor**
- Kategoria A. Autostrade
 - Kategoria C. Rruge Interurbane Dytësore
 - D. Rruge Urbane Kryesore
 - E. Rruge Urbane Dytësore
 - Kategoria F. Rruge Lokale

*Zona 18 ndodhet në territorin e Njësise Administrative Perondi, me sipërfaqe prej 9.84 ha

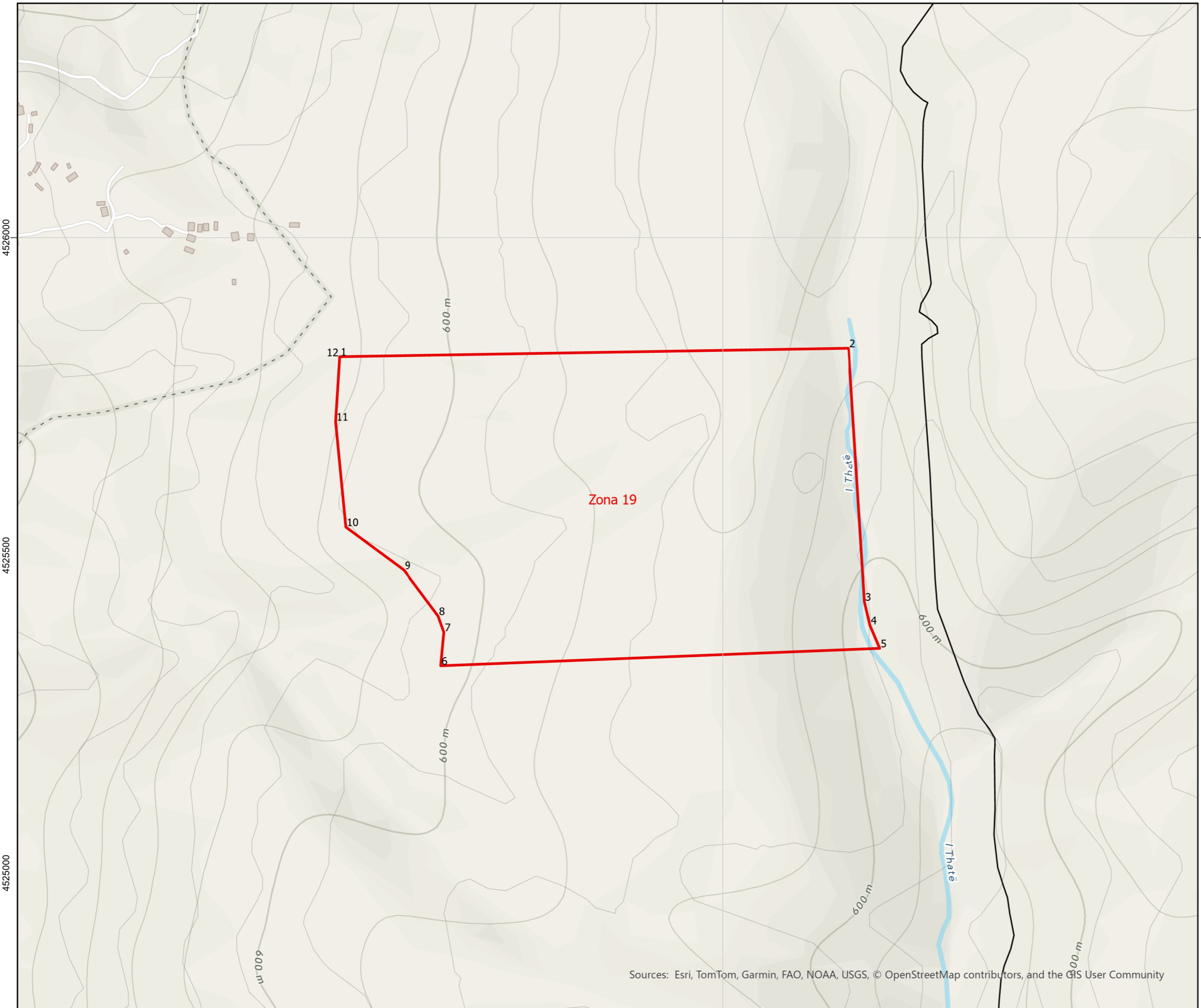
**Sistemi Koordinativ: KRGJSH (Korniza Referuese Gjeodezike Shqiptare) EPSG 6870

Zona 18**Njësia Administrative Perondi**

Nr.	Koordinata X	Koordinata Y
1	492388.2464	4520798.202
2	492521.2464	4520721.202
3	492564.6464	4520794.002
4	492650.7464	4520748.502
5	492643.7464	4520680.602
6	492649.3464	4520671.502
7	492667.5464	4520623.202
8	492545.0464	4520517.502
9	492498.1464	4520451.702
10	492484.1464	4520454.502
11	492470.1464	4520432.102
12	492479.2464	4520426.502
13	492445.6464	4520320.802
14	492426.7464	4520278.802
15	492409.9464	4520284.402
16	492415.5464	4520306.102
17	492391.7464	4520313.102
18	492383.3464	4520294.902
19	492344.1464	4520305.402
20	492309.1464	4520484.602
21	492377.7464	4520614.802
22	492381.9464	4520749.202
23	492381.2464	4520773.702
24	492388.2464	4520798.202

ZONA ME PËRPARËSI ZHVILLIMIN E EKONOMISË MALORE
ZONA 19, NJËSIA ADMINISTRATIVE LUMAS, BASHKIA KUÇOVË, QARKU BERAT

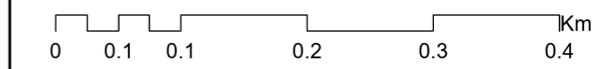
501000 501500 502000 502500



Njësia Administrative	Zona	Sipërfaqja (ha)
Kozarë	Zona 1	43.63
Kozarë	Zona 2	8.08
Kozarë	Zona 3	38.32
Perondi	Zona 4	4.68
Perondi	Zona 5	10.21
Perondi	Zona 6	5.10
Perondi	Zona 7	88.80
Perondi	Zona 8	7.44
Kozarë	Zona 9	6.64
Perondi, Lumas	Zona 10	1.76
Perondi, Lumas	Zona 11	0.96
Perondi, Lumas	Zona 12	8.05
Lumas	Zona 13	14.63
Lumas	Zona 14	14.85
Lumas	Zona 15	0.92
Lumas	Zona 16	31.73
Kozarë	Zona 17	0.84
Perondi	Zona 18	9.84
Lumas	Zona 19	36.90



1:6,000



Legjendë

- Zona me përparësi zhvillimin e ekonomisë malore
- Ndërtesa
- Bashkia Kuçovë
- Izoipse
- Kategoritë e Rrjetit Rrugor
- Kategoria F. Rruge Lokale

*Zona 19 ndodhet në territorin e Njësise Administrative Lumas, me sipërfaqe prej 36.90 ha

**Sistemi Koordinativ: KRGJSH (Korniza Referuese Gjeodezike Shqiptare) EPSG 6870

501000 501500 502000 502500

4526000

4525500

4525000

4526000

4525500

4525000

Zona 19**Njësia Administrative Lumas**

Nr.	Koordinata X	Koordinata Y
1	501396.861	4525812.69
2	502198.361	4525825.99
3	502223.561	4525426.99
4	502232.241	4525389.89
5	502247.641	4525353.77
6	501556.461	4525326.33
7	501561.361	4525379.11
8	501552.261	4525404.59
9	501498.221	4525476.83
10	501406.521	4525544.59
11	501390.421	4525710.49
12	501396.861	4525812.69